



# GREENSHEET



No. 28/17

Church Hill, Walthamstow, London, E17 9RZ

Telephone: 020 8509 9446

Email: [info@wsfg.waltham.sch.uk](mailto:info@wsfg.waltham.sch.uk)

Website: [www.wsfg.waltham.sch.uk](http://www.wsfg.waltham.sch.uk)

Student Absence Line: 020 8509 9444

3rd May 2018

Week 'B'

SCHOOL CALENDAR	CONTENTS	PAGE	CONTENTS	PAGE
Summer Term	Headteacher's Message	1-3	Diversity calendar	7
End: Friday	Information for Parents/Carers	3-6	Student information	4-7
20th July	Focus of the fortnight	4	Community events	9-11
	Ramadan information	5	School Calendar	12

May Bank

Holiday

Monday 7<sup>th</sup>

May

Monday 14<sup>th</sup>

May-Friday 22<sup>nd</sup>

June

Year 11 GCSE

Examinations

Half Term

Monday 28<sup>th</sup>

May - Friday 1st

June

Friday 22<sup>nd</sup>

June

Year 11 Leavers

Day

Thursday 12<sup>th</sup>

July

Summer Music

concert 7pm

Details TBC

## HEADTEACHER'S MESSAGE

Dear Parents and Carers

On Wednesday evening the school was busy with teachers from across the borough visiting us to share good practice or to develop their leadership capabilities as part of the Waltham Forest Challenge initiative. There is a great deal of exemplary work in the borough's schools being shared for the benefit of all students in Waltham Forest and I am pleased that WSFG is part of this cross-school, collaborative work.



Also this week, we had confirmation that we have been accredited for transforming practice under SSAT's Framework for Exceptional Education. The Framework for Exceptional Education is a self-review and planning tool incorporating SSAT's 30 years of experience in school improvement. Co-developed with a group of high-performing schools and reviewed by leading academics, the framework supports schools in quality-assuring their work and sharing effective practice.

To achieve accreditation as transforming in practice, Walthamstow School for Girls was reviewed by another high-performing school and an independent moderator from SSAT. SSAT's Chief Executive, Sue Williamson commented "for a school to be accredited for transforming practice is a real credit to their team and the quality of the work that they are doing." We are, of course delighted to have our educational practice recognised in this way.

The Alumnae Quiz Night on Thursday evening was entertaining and good for the "grey cells", as well as raising funds for the school. My thanks to the Alumnae Committee for their hard work to put this event together and to those of you who supported it. We are very fortunate to have the support of so many former students and staff and I hope that one day your daughters will return as adults to continue this work with just as many fond memories of WSFG. Once they have left Walthamstow School for Girls students truly start to appreciate just how many opportunities are on offer to them here.



One of these opportunities came the way of a group of twenty four Year 8 students on Thursday when they experienced a STEM (Science, Technology, Engineering and Maths) workshop and were given a real life engineering problem to solve, putting their engineering and technology skills to the test. Held at WSFG, our students were

joined for the day by a group of students from Highams Park School. This was a valuable learning experience for the students involved. Ms Healy will be co-ordinating more STEM activities in school soon.

It is always interesting to discover that our students are excelling at activities outside as well as in school and please do keep us informed of these achievements via [info@wsfg.waltham.sch.uk](mailto:info@wsfg.waltham.sch.uk). I reported in last week's Greensheet that we had two Year 8 students at the London Marathon representing Waltham Forest in the Mini Marathon. I have since learned that we also had a Year 7 student, Malaika, running in the Mini Marathon. This means that of the six students representing Waltham Forest under 13s at this event, three of them were WSFG students. Malaika also achieved a personal best at the race. Malaika, Ruby and Aoife – you make us proud.

You may be aware of redevelopment plans for St. Marys Churchyard land which shares a boundary with us at the rear of the school. A planning application has been lodged with the council for the new development and can be viewed at: <http://planning.walthamforest.gov.uk/> by searching for the planning application: **180314**. Whilst the school is delighted that there will be investment and development of community buildings in our locality as well as housing for key workers, there are a number of issues we would be seeking reassurances on, such as the additional height of the new residential development of fourteen flats overlooking our outdoor spaces where students play and socialise, possible security implications due to easier access to our grounds from intruders and the disruption the building works may cause to the operation of the school. We would welcome parents' and carers' comments on the application.

Comments need to be sent to [dmconsultations@walthamforest.gov.uk](mailto:dmconsultations@walthamforest.gov.uk) (quoting planning application 180314) by Thursday 31st May, 2018. Finally, if anyone has any specific expertise in the area of planning law, please contact our Business Manager, Mr Jalil: [r.jalil@wsfg.waltham.sch.uk](mailto:r.jalil@wsfg.waltham.sch.uk).

Meryl Davies  
Headteacher



**Focus of the Fortnight**  
**7<sup>th</sup> – 18<sup>th</sup> May 2018**  
**Banned Items**

Dear Parents/Carers,

The Focus of the Fortnight is on Banned Items. Please see page 5 of your daughter's planner for clarification of the items that are banned at WSFG. See also the list below. If a student is found to have a banned item in school, it will be confiscated and her conduct card will be signed. When appropriate, Parents / Carers will be contacted and will be asked to collect the item.

**PLEASE NOTE** - if your daughter has her mobile phone confiscated, she is NOT automatically entitled to have it back the next day. The school rule is that the phone will be returned to the Parent/Carer the week before the next school holiday. Parents/Carers will receive a letter asking them to collect the mobile phone from the school office on a given date. If Parents/ Carers wish to speak with the school about the confiscation of a mobile phone, please telephone the school and ask for Ms. Pratt. Please do NOT come into school and ask for the phone to be returned unless an arrangement has been made with Ms. Pratt for its collection. We do have arrangements for mobile phones to be handed in at the office at 8.30am for safekeeping during the school day as they are NOT allowed to be carried in school from 8.45am – 3.30pm.

In order to support your daughter and the school with this Focus, please ensure she is clear about the banned items at WSFG.

Ms. K.H.Pratt  
 Assistant Headteacher



**Sanctions to be applied.**

- If a student is found to have a banned item in school, it will be confiscated and the conduct card will be signed. When appropriate, Parents/ Carers will be contacted and will be asked to collect the item.
- If the item is dangerous, further sanctions will be taken according to the School Positive Behaviour for Learning Policy.
- Banned items are as follows:- Illegal items, dangerous items, mobile phones, all electrical items, headphones, chewing gum, aerosols, liquid paper, glass bottles and non-uniform items (see page 5 of the Student Planner).

## Parent Carer information Ramadan

Dear Parents/Carers

Could you please ensure that if your daughter is fasting, she does so according to the sunnah method. That is they should have a full and nutritious breakfast (SEHRI) before keeping the fast.

Your daughter should not keep fast if she is feeling unwell. In addition, in the rare event of feeling very ill during a fast, she should break the fast rather than allowing her condition to get worse.

As agreed by medics, fasting is not at all detrimental to our health and in fact it can be physically very beneficial. However, the correct method of fasting should be adhered to.

Please feel free to contact the school if you have any questions.

Mrs Ahmed & Ms Siddiqui

## 100% Attendance for April

Well done to 7F and 7G, 8C, 9S, 10S and 11S for being April winners. Postcards have been displayed on your notice board.



Year to date winners are 7C, 8F, 9S, 10S & 11S.

Don't forget, winners for each term receive a form treat and 100% attenders receive a new star badge.

Our Headteacher has also sent postcards to the successful forms.

Ms King  
Student Attendance Manager

## Year 7 Green Exhibition

As we mentioned at the Year 7 Parent Information Evening, we will be launching this Year's Year 7 **GREEN** project and exhibition next week.

This is an opportunity for the Year 7s to showcase their **GREEN** skills (**G**rowth, **R**esilience, **E**nergy, **E**mpathy, **N**ewness) as well as making progress in their subjects.

There are two key dates:

**Friday 4<sup>th</sup> May (morning) – GREEN project launch**

**Thursday 28<sup>th</sup> June 4-6pm – The GREEN Exhibition**

The project theme is '**Identity**'. All Year 7s will be working on finalising their best work to display for the exhibition. Every one of our Year 7 students will be displaying a self-portrait and a piece of poetry. It is important that they work hard to make sure they present their best work and that they feel proud of their work.

The exhibition will also act as a fundraiser event for a good cause – we will announce the name of the charity nearer the time as we are currently finalising this with students.

If your daughter is elected as a **GREEN** rep, she will be playing a major part in organising the event. We really look forward to working with her on this.

Please do support this event by:

- ◆ Speaking to your daughter about the launch and about how her work is going over the next few weeks
- ◆ Coming to see the exhibition on **Thursday 28<sup>th</sup> June**
- ◆ We will also be asking for food and prize donations nearer the time and will be looking for a celebrity guest. Please do contact us if you can help in this area.

Thank you in advance for all of your support – we look forward to seeing you in June.

Ms Philippou and Mr Jones

## WSFG Diversity Calendar for the month of May



### WORLD PRESS FREEDOM DAY 2018

KEEPING POWER IN CHECK:  
MEDIA, JUSTICE AND THE RULE OF LAW

3 MAY

#WorldPressFreedomDay  
#PressFreedom



May  
2018



	Monday	Tuesday	Wednesday	Thursday	Friday	Saturday	Sunday
Week 1		1	2	3	4	5	6
Week 2	7	8	9	10	11	12	13
Week 3	14	15	16	17	18	19	20
Week 4	21	22	23	24	25	26	27
Week 5	28	29	30	31			

May is Action on Stroke Month | Mental Health Awareness Month | Civic Fibrosis Month | Hepatitis Awareness Month | Hoagies Syndrome Awareness Month | Foster Care Month

○ Last Quarter ● New Moon ◐ First Quarter ○ Full Moon

### Special Days

- 1st **Relaxa** - Senegal - Wicca/Pagan, Northern and Southern hemispheres
- 1st **Lailat al-Bara'ah** - Islam
- 2nd **Twelfth Day of Eidzan** - Baha'i
- 2nd **Birthday of Guru Arjan Dev** - Sikh
- 3rd **World Press Freedom Day**
- 3rd **Yom Ha'Atzma** - Judaism
- 7th **Bank Holiday** - England, Wales, Scotland, Northern Ireland and ROI
- 8th **World Overhaul Cancer Day**
- 8th **World Red Cross Red Crescent Day**
- 9th **Europe Day**
- 10th **Ascension Day** - Christian
- 13th **Our Lady of Fatima** - Catholic Christian
- 13th **Yom Yerushalayim (Jerusalem Day)** - Judaism
- 15th **International Day of Families**
- 16th **Ramadan begins** - Islam
- 17th **International Day Against Homophobia, Transphobia and Biphobia**
- 17th **Ascension of the Lord** - Orthodox Christian
- 20th **Shavout** - Judaism
- 20th **Pentecost** - Christian
- 21st **World Day for Cultural Diversity for Dialogue and Development**
- 22nd **International Day for Biological Diversity**
- 23rd **Birthday of Guru Arjan Dev** - Sikh
- 24th **Declaration of the Baha'i** - Baha'i
- 27th **Trinity Sunday** - Christian
- 27th **Pentecost** - Orthodox Christian
- 28th **Bank Holiday** - England, Wales, Scotland and Northern Ireland
- 28th **Ascension of Baba' Baha' - Baha'i**
- 28th **International Day of United Nations Peacekeepers**
- 31st **World No Tobacco Day**
- 31st **Corpus Christi** - Catholic Christian

All Jewish holidays begin at sundown on the evening before.

CHAPEL END SAVOY PLAYERS present A G&S RARITY!



# THE GRAND DUKE

**Gilbert & Sullivan**

Semi-staged concert performances:

Devised & Directed by Leon Berger

Musical Direction by Graham Offord

**Evenings: Friday 4 May & Sat 5 May (7.30pm)**

**Matinees: Sat 5 May & Sun 6 May (2.30pm)**

All tickets £10.00    Box Office: <https://thecentre17.com>

Tel: 020 8529 3143

**CentrE17, 1 Church Hill, Walthamstow, E17 3AB**

5 minutes walk from Walthamstow Central bus, train and underground station

Public transport recommended—there is no parking at the venue



Come to our  
**OPEN DAY**

**Saturday 12 May**

10am to 2pm

The College of  
Haringey, Enfield  
and North East London



**Book Now!**  
at [conel.ac.uk/opendays](https://conel.ac.uk/opendays)

Come and find out about our great range of **Courses and Apprenticeships** and what it's like to study at **England's top college for student satisfaction.**

Follow link below to book your space at our Open Day -

<https://www.conel.ac.uk/news-events/open-days.html>

not only will you beat the queues, but everyone who pre-books a ticket will receive a voucher for a free tea, coffee or cold drink whilst at the open day!



# **TEDEd** Club Talks Event

**A fantastic opportunity  
OPEN TO ALL YEAR GROUPS**

**Tuesday 8th May 2018 6pm – 8pm**

**Sir George Monoux Sixth Form College**

Chingford Road

London

E17 5AA



In TED Ed club students work together to discuss and celebrate creative ideas. Club leaders receive TED Ed's flexible Clubs curriculum to guide their school's club and to help inspire tomorrow's TED speakers and leaders.

Students from Monoux will give 2 minute talks on various topics, here are just a few:

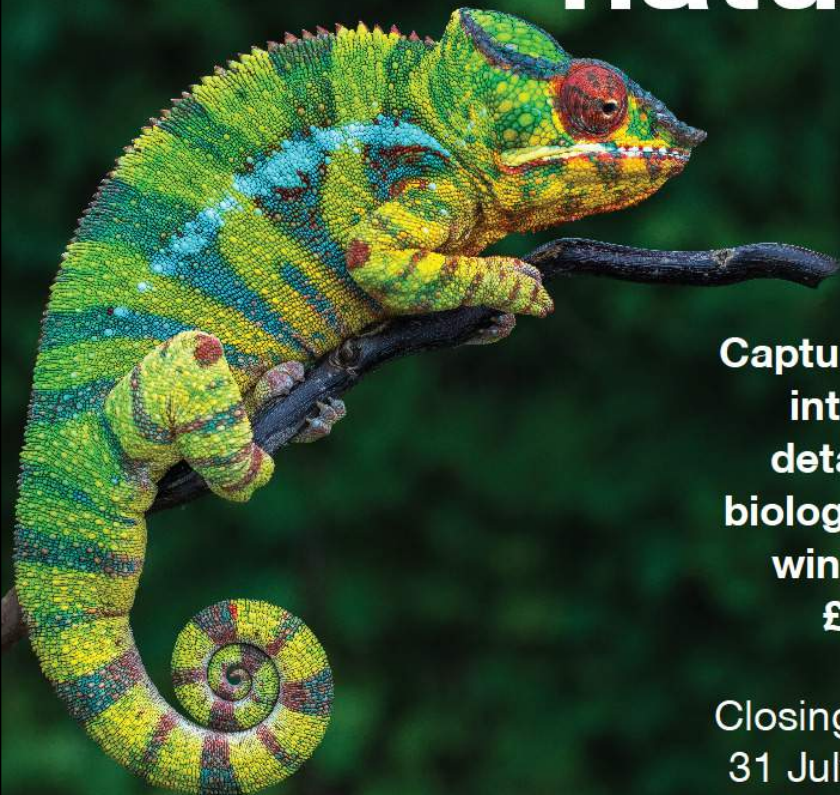
- Misconceptions of oppression in Islam
- Does our money really belong to us? (tax)
- The effect of capitalism on our identity
- Personal development
- Mental health
- Building a legacy
- Animal testing
- Social obligations/expectations for the black female in the corporate world
- Fairer pay for doctors/nurses (They look after us, but does the government look after them?)

See **Ms Robinson** if you would like to attend.



Photography Competition 2018

# Patterns in nature



Capture the intricate details of biology and win up to **£1,000**

Closing date:  
31 July 2018

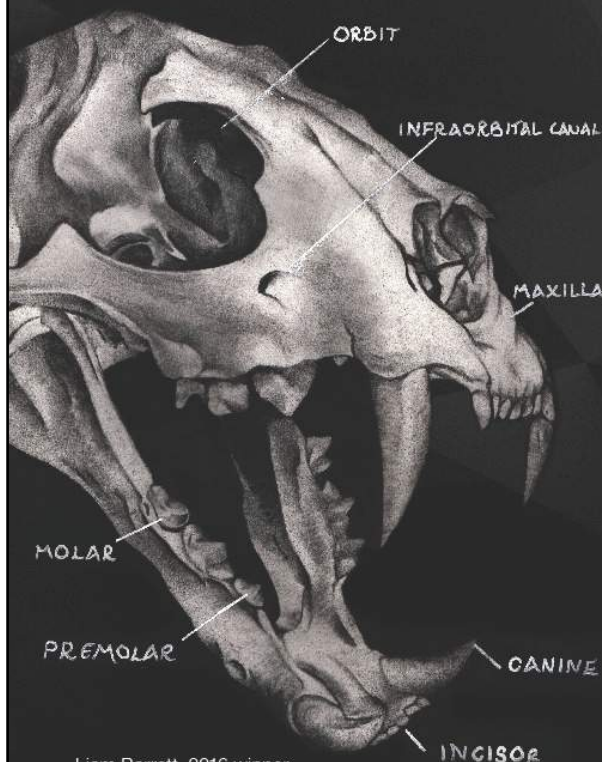
Sponsored by  
**eppendorf**

[rsb.org.uk/photocomp](http://rsb.org.uk/photocomp)

Combining art with science and  
celebrating specimen drawing in schools



# The Nancy Rothwell Award



Liam Barrett, 2016 winner

Draw, paint, sketch  
or digitally create  
artwork capturing the  
anatomy of plants  
and animals

Open to pupils aged 7  
to 18 years old

**RVC**  
Royal  
Veterinary  
College  
University of London

**Closing date: 10 September 2018**

[rsb.org.uk/nancy-rothwell-award](http://rsb.org.uk/nancy-rothwell-award)

## School Calendar for 2017-18

### Summer Term

Ends: Friday 20th July

### May Bank Holiday Monday 7<sup>th</sup> May

Monday 14<sup>th</sup> May - Year 11 GCSE Written Examinations

Friday 22<sup>nd</sup> June

### Half Term

Monday 28<sup>th</sup> May - Friday 1st June

Friday 22<sup>nd</sup> June Year 11 Leavers' Day

Thursday 12<sup>th</sup> July Summer Music concert 7pm Details TBC

## School Calendar Dates 2018-2019

### Autumn Term 2018

#### Monday 3<sup>rd</sup> September to Wednesday 19<sup>th</sup> December 2018

Monday 3<sup>rd</sup> September 2018 Staff Training Day - School closed for students

#### Tuesday 4<sup>th</sup> September 2018 Lessons begin for students - Week A

Thursday 11<sup>th</sup> October 2018 Early school closure at 2.30pm for Open Evening

#### Half Term: Monday 22<sup>nd</sup> - Friday 26<sup>th</sup> October

Tuesday 11<sup>th</sup> December 2018 Early school closure at 2.30pm for Community

Wednesday Party 19<sup>th</sup> December 2018 End of Autumn Term

### Spring Term 2019

#### Thursday 3<sup>rd</sup> January 2019 to Friday 5<sup>th</sup> April 2019

#### Half Term: Monday 11<sup>th</sup> February to Friday 15<sup>th</sup> February 2019

### Summer Term 2019

#### Tuesday 23<sup>rd</sup> April 2019 to Friday 19<sup>th</sup> July 2019

#### Half Term: Monday 27<sup>th</sup> May 2019 to Friday 31<sup>st</sup> May 2019