



# Walthamstow School for Girls

Greensheet

26 November 2021

## Headteacher's Message





*"You're never really a whole person if you remain silent, because there's always that one little piece inside you that wants to be spoken out, and if you keep ignoring it, it gets madder and madder..."*

(Audre Lorde: "Your Silence will not Protect You")

**Dear Parents, Carers and Students**

#### **Student Voice:**

Student voice is an important part of our **School Improvement Plan**. Ms Warren and I have conducted assemblies on this topic, explaining the importance of young women feeling empowered, as illustrated in the Audre Lorde quotation above.

**A huge thank you to Ms Warren and our year 11 students** who are presenting in assemblies this week and next week. They are working hard to make sure that every student in school feels that they have a voice and can express their ideas about issues both within and outside school. I am really looking forward to seeing the way in which we develop student democracy over the coming year.

#### **COVID:**

Due to the rising number of current cases, particularly in year 7, **we have decided to reintroduce masks in classrooms, as advised by Public Health, for a short period of time**. It is not what we would have hoped for but we need to be cautious and careful.

I am asking parents to be particularly vigilant at the moment. **If your child has any symptoms, including a cold or a headache, please keep them at home** and ensure that they have a **PCR test**. **Do not send your child to school unless you have a negative result**.

#### **Year 11 mock exams:**

Our year 11s have now finished their **first round of core mock examinations**. Having spoken to the girls, many have found the strategy of splitting up the mock examinations beneficial and are already reflecting on habits and behaviours they need to change prior to January. Well done to our year 11s who have conducted themselves in an exemplary fashion, have managed their emotions well and have been

thoughtful and reflective in approaching revision. They are a real credit to you as parents/carers and Ms Warren as their SPL.

#### **Phones:**

Some students are bringing phones into school and are not handing them in to reception. Where we have found or seen phones in school, they have been confiscated. However, some parents have told us that this is potentially compromising your child's safety. If this is the case, could you please ensure that your daughter hands in her phone to reception. **I want to reiterate that if a phone is seen or found in school, it will be confiscated for 48 hours and must be collected by the parent.**

#### **Blazers:**

Please remind your daughter that blazers should be worn around school at all times. Students may remove their blazers in classrooms. Behaviour points will be given to students who are not wearing blazers. Thank you for supporting the school in maintaining high standards of uniform.

#### **Tik Tok**

Over the past few weeks, schools across the country have been reporting a significant increase in the misuse of social media apps by young people to bully and harass others, including fellow students and school staff.

I feel very sad that I have to write to parents and students to make you aware of the potential consequences of these actions. We are currently investigating the use of Tik Tok accounts relating to the school and have been in touch with the Met Police and the Safer Schools officer. **Please reinforce with your daughters that this kind of behaviour is contrary to our school values and anyone found to be posting or sharing such content will be held responsible for it.** This means they will face serious consequences, including putting their place at WSFG at risk, and if relevant, will be reported to the police for any breach of the law.

#### **999 Heroes**

I am really proud that we will be celebrating the contribution of the emergency services in school next Friday through our non-uniform charity event. Students will wear one item of clothing or an accessory to raise money for the '999 Heroes' charity. Given the events of the last two years, we should all be grateful to our 999 and NHS heroes. **Thank you to our school charity reps who are raising our awareness and raising money for this important charity.**





## Parent & Carer Information





At this time of year, we know that many families in our community can struggle - often making difficult decisions on whether they can afford to buy food for their families or heat their home.

To help support families in our local community, we will be running a Food Drive between **Monday, 22nd November and Monday, 13th December.**

Each form group will have their own collection point in their form room, and everyone is encouraged to bring in what they can to donate. Prizes will be awarded for the top form in each year group which collects the highest number of donated items!

We encourage everyone to donate as generously as they can to help support families in our local community. We look forward to celebrating how generous the WSfG community can be!

**Additional food items include:-pre-packed Christmas treats (sweets, biscuits, Christmas pudding, cakes, etc.)**

Ms Schaber

Associate Assistant Headteacher

Cereal or porridge	Canned soup	Canned spaghetti or baked beans	Canned fish or meat	Biscuits
Canned Kidney beans or Chick Peas	Canned potatoes/ Instant mash	Canned Vegetables/ tomatoes	Lentils/beans/Pulses	Canned Fruit/ dessert
Sugar	Long Life milk / Milk Powder	Teabags/ Instant Coffee	Pasta or Noodles or Pasta Sauce	Flour Self-raising and plain
Squash	Rice	Couscous	Baby food/nappies	Cooking Oil
Hand Soap (bars)	Shower Gel	Tooth Brush/ Tooth Paste	Women's Men's toiletries	Shampoo
Sanitary Towels /Tampons	Washing Powder/Tablets	Dog/cat food	<b>-PRE-PACKED CHRISTMAS TREATS (SWEETS, BISCUITS, CHRISTMAS PUDDING, CAKES, ETC.)</b>	



## Severe Weather and Emergency School Closures



*1 - Emergency School Closures or Severe Weather*

### Severe Weather and Emergency School Closures

In the event of severe weather, the school will remain open when possible. If however the school considers an emergency closure as a result of severe weather, the decision on whether the school stays open will be taken by the Headteacher after carrying out a risk assessment.

**Information on any school closure will be available on the school's website:**

[www.wsfg.waltham.sch.uk](http://www.wsfg.waltham.sch.uk). We also aim to send a text message to all parents/carers in the event of a school closure, however there are sometimes delays receiving these messages promptly.

Please ensure that the School Office has up to date contact details, including addresses and telephone numbers (as well as the mobile number of the emergency contact).

It is essential that the school has at least **one** land line and a mobile number.



## Faculty News



## WSfG Global Alliance Logo Competition

# WSFG Global Alliance Logo Competition



The WSFG Global Alliance has been working hard to improve social cohesion within our school community.

WGA would like you to design a logo to best represent our diverse community. The logo will be used on all correspondence posted by the WGA.

Task: Design a Logo to represent the WSFG Global Alliance

Submit your entry by: **Friday 3<sup>rd</sup> December**

Send entry to Ms Shafiq: [n.Shafiq@wsfg.waltham.sch.uk](mailto:n.Shafiq@wsfg.waltham.sch.uk)

## Drama - National Theatre Workshop



**National Theatre Young Techs**

### National Theatre Young Technicians

**Starting in January 2022**

Are you interested in lighting, sound, video and automation?  
Are you aged between 14 – 18?  
Then our technical theatre workshops could be for you!

National Theatre Young Technicians is an exciting opportunity to develop skills in technical theatre and learn all about a variety of backstage and off-stage roles from top industry professionals.

*"This is a really practical course where you get stuck in and learn things in great detail with industry professionals."*  
– Previous participant of Young Technicians

This is a **FREE** training opportunity which will run in-person at National Theatre. To apply please complete the application by Sunday 5 December.

[nationaltheatre.org.uk/young-people](https://nationaltheatre.org.uk/young-people)

*This year we have fewer places available on the Young People's Programme, and so we are furthering our commitment to diversity and access by concentrating recruitment in three areas that we recognise are currently underrepresented in the field of technical theatre: Black, Asian and ethnically diverse young people, young women and young people from working class backgrounds*

The National Theatre's Partner for Learning is Bank of America

The Mohn Weclake Foundation supports nationwide Learning programmes for young people

The Bank of America Foundation supports nationwide Learning programmes for young people



**Workshop Dates:**  
Tuesday evenings 5 – 8pm

**Term 1:**  
4, 11, 18, 25 January  
1, 8, 22 February  
1, 8, 15, 22 March

THE NATIONAL THEATRE WORKSHOP  
NATIONAL THEATRE WORKSHOP  
NATIONAL THEATRE WORKSHOP

THE BANK OF AMERICA FOUNDATION  
BANK OF AMERICA FOUNDATION  
BANK OF AMERICA FOUNDATION



## LRC - Accelerated Reader



**Accelerated**<sup>TM</sup>  
Reader

### Accelerated Reader News

Well done to all the Year 7 and Year 8 students who have already started quizzing.

Reading should be both pleasurable and a way of extending learning. It can also help you relax and develop your empathy skills. Empathy helps you to understand the world and the people around you in a healthy, positive way.

It is great to see that you are using your time so productively to keep up with your reading.



We have two students who have already reached over a million words in their quizzes.

*Aysha in 7F and Varsaginy in 8F*

*Congratulations!*

Your AR login should be in your student planner and here is the link <https://ukhosted56.renlearn.co.uk/2243312>  
The key part of the link is ukhosted56, so check the top of your computer screen to see that it is 56.

I am looking forward to seeing more of our students engaging with reading.

Mrs Kelly, LRC.

## P.E. - Year 10 Basketball



Congratulations to the Year 10 basketball team who have been progressing through the Waltham Forest league with 2 wins in 2 games

**WSFG v Holy Family - Thursday 18th November 2021**

Result: WSfG wins 14-5! (game abandoned in the 3rd quarter due to illness)

**WSFG v Lammas - Monday 22nd November 2021**

Result WSfG wins 40-12!

The team:

- Leigh
- Nell
- Aminah
- Betty
- Debra (captain)
- Boluwatife
- Lily
- Hannah
- Jahmica

Ms Scully

P.E. Faculty

## Science - *'All that Glitters is not Gold!'*

### ***'All that Glitters is not Gold!'***

During this year's summer holidays, I decided to preoccupy myself with a bit of science and investigation. In the science unit, I enjoy physics and biology. In particular, I find enjoyment in magnifying certain objects and viewing things where the naked eye cannot see. I find it interesting and quite fun. In addition to this, I also enjoy performing "experiments" to comprehend what reactions may or may not occur.

While I was outside, during the night, I had my flashlight on and decided to take a walk. Throughout this stroll, something slightly shiny and reflective caught my eye. Knowing my dad has recently purchased a microscope, I decided to check out the unknown object. I soon realized it was some sort of rock, therefore I made up my mind to take it home with me and study it.

Throughout the next few days, I analysed the rock under a microscope and found a few interesting things, I wanted to dig deeper in. Once I had done more research, a thought struck my head that some parts of the rock seemed like gold or a substance similar to gold. After this coming to my realization, I performed a few small "experiments" which included: testing the magnetic pull, measuring the mass of the rock, malleability test and acidity test (6%).

The conclusion to my tests was:

"Gold is extremely malleable and easy to chip and scratch off, the substance I have studied matches this result. In addition to this, the substance was reflective, like a mirror and weighed a total of "90 grams."

During the acidity test, I had placed the rock into white vinegar with 6% acidity. After a while, I noticed that some minerals were disintegrating as others stayed on. Although with the magnet testing, I noticed that I felt a very slim pull. This result was inaccurate as I performed this test using my hands (which are not stable.) Therefore, the magnetic pull test was N/A. With the results I have so far, my reason to believe the rock contained “gold” was debatable.”

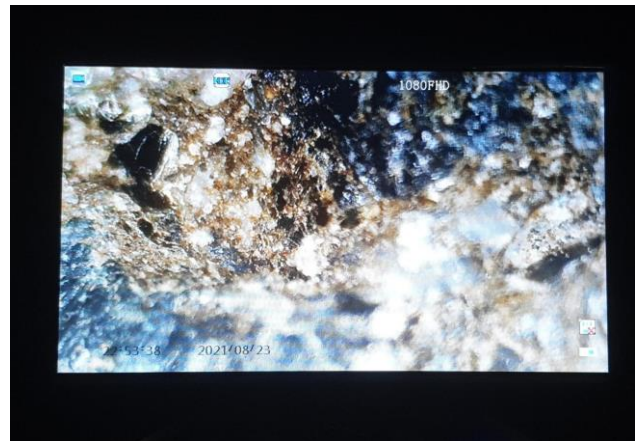
After running these few tests, I decided to extend my knowledge by emailing a few science teachers including Mr. Kerr, Ms. Oshodi and Mrs. Keserauskaite. They all replied to me with similar statements. I could be mistaken for pyrite (Fools gold), the mineral could have been iron, and the grain sizes are dependent on the cooling of magma.

After the holidays had ended, Mrs. Keserauskaite asked me to bring in the rock for further analysis. I entrusted her with the rock for a few weeks and I received further results which another science technician had looked at, Ms. Rouse.

Ms. Rouse has a degree in animal science and took A levels in all three sciences including chemistry, biology, and physics. Therefore, she is highly knowledgeable about science, including rocks. Ms. Rouse stated that she believes I have “gabbro”. Which has a density of 2.8125. Moreover, she stated that if my rock did contain gold, it would be an exceedingly small amount and it is uncertain unless a chemical analysis is performed on the rock, which she is unable to perform in school.

I am pleased with these results and prefer to keep the rock as a “special find”. I would also like to thank all the teachers and staff that have helped me with my “investigation.” Thank you.

*Samanta 9F*





## English - Refugee Week: Stories & Supper



In the morning  
birds were singing

Poetry and stories, fiction and  
non-fiction, words and images,  
challenging assumptions  
about migration.

A celebration of the creativity of refugees  
in the Stories & Supper community, this  
is ultimately a book about hope.

Now available to buy at:  
[www.storiesandsupper.co.uk/buy](http://www.storiesandsupper.co.uk/buy)

Book launch, free (booking essential)  
Friday 26th November 7pm  
Today Bread, Central Parade, E17 4RT

Latin American Supper Club, £35  
Saturday 4th December 7pm  
The Sanctuary, Greenleaf Baptist Church, E17 6QQ

Tickets: [bookwhen.com/storiesandsupper](http://bookwhen.com/storiesandsupper)  
Socials: @stories\_supper

 Supported using public funding by  
**ARTS COUNCIL  
ENGLAND**



Last term as part of Refugee Week (14-20 June), a group of Year 7 students took part in a fantastic writing workshop with the 'Stories & Supper' team. Students learned about migration first-hand and wrote their own poems on the theme of 'Home.'

'Stories & Supper' team were so impressed with the students at all their school visits that they chose one poem from each school to publish in book. **See flyer for further details on the book launch taking place on Friday 26th November.**

To purchase a copy click on the link: [www.storiesandsupper.co.uk/buy](http://www.storiesandsupper.co.uk/buy)

Ms Schaber

Associate Assistant Headteacher



## THINKING ABOUT DE-CLUTTERING YOUR LIFE?

The LRC will gladly accept  
gently used books





## Friends of Walthamstow School for Girls

### WSfG Friends Group Merchandise

Please contact Ms Kelly or Ms Winter via the school's email address (below) if you wish to make a purchase.

All proceeds go toward the WSfG Friends Group so that they can support events for the school.

Cards (various designs): 50p each or 4 for £1.50

Tote bags (various designs): £3

Key rings: £2

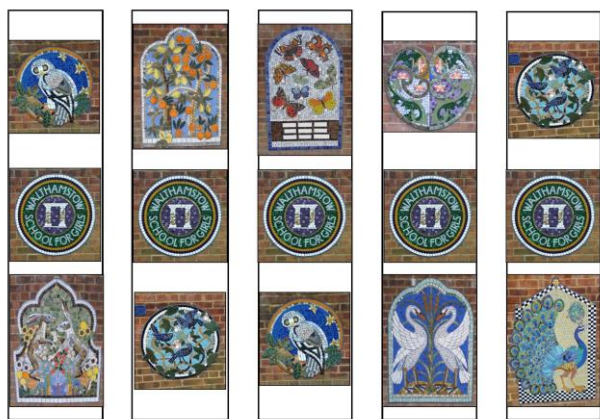
Mugs: £5

Pen: £1

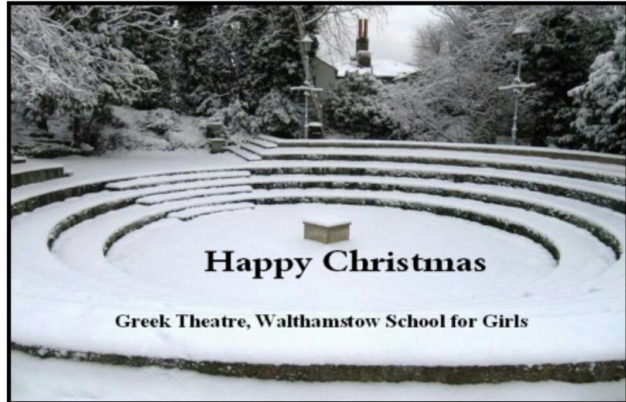
Bookmark: 10p

Website: [www.wsfg.waltham.sch.uk](http://www.wsfg.waltham.sch.uk)

Email: [info@wsfg.waltham.sch.uk](mailto:info@wsfg.waltham.sch.uk)







## School Calendar



### Autumn Term 2021

- Wednesday 1 September 2021 to Friday 17 December 2021
- **Friday 26 November: SCHOOL CLOSED**
- Wednesday 1 -Wednesday 15 December: Year 11 Career Interviews
- Wednesday 15 December: Christmas Carol Concert
- Winter Holiday: Monday 20 December 2021 to Monday 3 January 2022

### Spring Term 2022

- Tuesday 4 January 2022 to Friday 1 April 2022
- Thursday 6th January -Friday 21st January 2022: Year 11 Non-Core Mock Examinations
- Thursday 17 January: Year 9 Options Evening
- Thursday 10 February: Year 9 Parent and Carers' Evening
- **Half Term: Monday 14 February 2022 to Friday 18 February 2022**
- Spring Holiday: Monday 4 April 2022 to Monday 18 April 2022

### Summer Term 2022

- Tuesday 19 April 2022 to Tuesday 19 July 2022
- Monday 16 May– Friday 27 May: KS3 Exam Fortnight
- **Half Term: Monday 30 May 2022 to Friday 3 June 2022**
- Monday 06 June—Friday 24 June: Year 10 Exams

**PLEASE NOTE THESE DATES ARE SUBJECT TO CHANGE**

## Community Events



**Knitters and Crafters needed!**

**Can you make a hat to help keep the homeless warm this winter?**

**We welcome donations of wool, crochet hooks (no.6) and knitting needles (size 4mm).**

**Bring along any donations to the LRC and pick up a pattern to get started.**

**Donations to be brought in by Friday 11<sup>th</sup> December.**

## Contact Us



Church Hill, Walthamstow, London, E17 9RZ

Telephone: 020 8509 9446

Email: [info@wsfg.waltham.sch.uk](mailto:info@wsfg.waltham.sch.uk)

Website: [www.wsfg.waltham.sch.uk](http://www.wsfg.waltham.sch.uk)

Student Absence Line: 020 8509 9444

