



GREENSHEET



No. 12/18

Church Hill, Walthamstow, London, E17 9RZ

Telephone: 020 8509 9446

Email: info@wsfg.waltham.sch.uk

Website: www.wsfg.waltham.sch.uk

Student Absence Line: 020 8509 9444



30 November 2018

Week 'B'

SCHOOL CALENDAR	CONTENTS	PAGE	CONTENTS	PAGE
Autumn Term 2018	Headteacher's message	1-2	Faculty news	8-12
End Friday 21st December 2018	Parent/Carer information	3-11	Dear Day	9
Monday 3rd December	Student information	3-12	Diversity calendar	10
Staff inset day	Volunteer Fundraiser	3	Christmas Carol concert	16
school closed to students	Student Leave during term time	4	Community events	14-19
	Community party	6	Eat or Heat information	17
	Focus of the fortnight	7	School Calendar	20
Thursday 6th December	HEADTEACHER'S MESSAGE			
Presentation	Dear Parents and Carers			
Evening Ex-Year 11	This week has certainly been very varied with, as always, several opportunities to feel proud and honoured in my role as Headteacher and some that give me sadness.			
Tuesday 11th December	Part of the work we are required to do as a National Support School, and with me as a National Leader of Education, is to work with a number of other schools outside the borough on specific projects to either help that school or academy with school improvement or else work with them to look at strategies to retain their very best teachers so that their students are taught by well-trained subject specialists. It is well known that our UK schools are facing a huge crisis in teacher recruitment and retention. For example, the retention rates for early –career teachers (in their first four-five years of teaching) has fallen in recent years (from 71% of teachers in 1997 staying in the profession for five years to 67% now), whilst the number of teachers making it to retirement has more than halved. Despite more pupils in the system, secondary teacher numbers have fallen from 225,500 in 2010 to 204,200 in 2017. At WSFG, we have a low staff turnover, and we have fortunately been able to recruit excellent subject specialists whenever a vacancy			
Early school closure at 2.30pm for Community Party				
Thursday 13th December				
College Roadshow 6-7.30pm Year 11				
Tuesday 18th December				
Christmas Carol Concert				

arises, but this is certainly not the case elsewhere. Teaching remains one of the most rewarding and varied professions there is, so if you know someone thinking of teaching, and this might be you, then do get in touch! If you are interested in working more closely with us in different ways, please read our advertisement in this Greensheet for one or possibly more voluntary fundraisers.

So a proud moment was our after school whole staff training on Wednesday, when we all met together in different workshops exploring some of our new technology, being trained by CUREE in coaching students and then discovering more about our new student leadership scheme, LORIC. 'It's brilliant' exclaimed a very experienced member of staff so we are all keen to continue the roll out to students.

There are always plentiful proud moments with our students and these are always included in the Greensheets to give you some idea of the varied work which goes on here outside the classroom.

This week, I also attended a conference at Walthamstow Town Hall focusing on community safety attended by a wide range of local professionals, the police and councillors. This was the launch of a joint initiative to work strategically to tackle criminal behaviour in our borough. This leads me to report that on Friday evening, after performing at a wonderful community concert in another part of the borough, a number of our musicians, accompanied by staff, were harassed by a group of younger female teenagers unknown to the school on the way back and were made to feel unsafe. This is wholly unacceptable. We remain committed to offering our students a wide range of experiences outside the classroom-in fact our staff are passionate about this- so this will not change our practice-but nonetheless, we are very saddened that this happened. Our colleagues are grateful for the support they have been given by the parents of the girls involved.

Please note that there has been a diary change to the Carol Concert at Saint Mary's Church. This will now take place on **Tuesday 18th December**. See page 16.

Meryl Davies
Headteacher

This Sunday (2 December) is the first night of Hanukkah, the Jewish Festival of Lights, which lasts for eight days.

Happy Hanukkah to all our Jewish students, families and staff.



Reminder: Monday 3rd December Staff inset day school closed to students



Volunteer Fundraiser

Required as soon as possible

We are looking to engage a well organised and innovative Volunteer Fundraiser.

The post would ideally suit someone who has a good knowledge of Walthamstow and the local community. The successful applicant will have excellent communication and research skills and a passion for raising awareness of the school. The suggested hours are 25-30 hours per month (6-7 hours per week).

An information pack is available from the school website:

www.wsfg.waltham.sch.uk.

If you are interested in applying please write a brief expression of interest (no more than 2 sides of A4) and email it to Mandy Madhani, HR Manager;

m.madhani@wsfg.waltham.sch.uk

Closing date: Wednesday 12th December 2018 (noon)

Interview date: To be confirmed

Walthamstow School for Girls is committed to safeguarding and protecting the welfare of children and young people. The successful candidate will be subject to an Enhanced DBS check.

Walthamstow School for Girls is committed to Safer Recruitment practices and procedures.

Parent/ Carer Information

Student Leave During Term Time

A student's absence during term time can seriously disrupt the continuity of her learning. Not only does she miss the teaching provided on the days she is away, she is also less prepared for the lessons building on that after her return. There is a consequent risk of underachievement which we and you must seek to avoid. Therefore, the school DOES NOT authorise absence during term time for family holidays or trips abroad.

Parents or carers do not have the right to take their children out of school for holidays and the school will only grant leave of absence in truly exceptional circumstances.

A student who is absent longer than ten days after an agreed return date, or without authorisation, can legally be removed from the school roll.

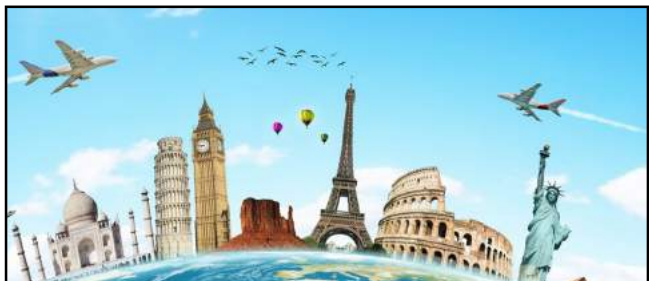
Parents or carers who take their daughters out of school without the authorisation of the Headteacher face court action and a fine.

In considering whether or not to authorise leave of absence, the school will look at each case individually, taking into account a student's overall attendance, her stage of education, (e.g. examinations), and the reason for the absence. It is very rare that any student is granted leave of absence.

Leave of Absence forms can be obtained from the school office and all requests should be submitted to our Attendance Manager **at least four weeks before the first day of requested absence.**

Arrangements for trips should NEVER be made before permission has been granted by the Headteacher.

Ms King
Student Attendance
Manager





Polite reminder to parents and carers

Please do not stop or wait on the road markings outside the school.
Please be considerate towards the local community and other road users if you bring your daughter to school as this endangers the lives of our students and the local community.

Highway Code Rule **Rule 238 states**

You **MUST NOT** wait or park on yellow lines during the times of operation shown on nearby time plates (or zone entry signs if in a Controlled Parking Zone)

Double yellow lines indicate a prohibition of waiting at any time even if there are no upright signs.



You **MUST NOT** wait or park, or stop to set down and pick up passengers, on school entrance markings when upright signs indicate a prohibition of stopping.

Also a reminder to parents picking up their children to turn their engines off when parked up on nearby streets.

Thank you



Parent Information

Dear Parents/Carers,

In an attempt to save time and paper, WSFG would like to keep you informed of important communication including our weekly Greensheet by using email.

Please take a moment to inform us of your email address, if you have not done so already, via info@wsfg.waltham.sch.uk.

Please ensure that the school has up to date contact details.

Your email address will not be shared or used for any other purpose.

Thank you.

Ms N Janes
Administrative Manager



Community Christmas Party

Dear Parents and Carers,

Each year at WSFG we host a community Christmas party. This is a very special event which is really important to us when the whole school comes together to organise a celebration with food, gifts and entertainment for the elderly members of our community. We like to show them how much we appreciate and value them and to make sure they have a good time with some great company.

This year, our community party will take place on the afternoon of Tuesday 11th December. School will close early at 2.30pm.

If you have any unwanted (brand new) gifts that we could offer our guests, please send them to the Humanities office via your daughter(s).

Last year was one of our best ever community parties and, with your support, we'd like to make sure this year is even more memorable.

Thank you.

Ms Philippou
Assistant Headteacher



Focus of the Fortnight
3rd – 14th December 2018
(not) Chewing

Dear Parents / Carers,

All students are clear that chewing gum is a **banned item** and is therefore not allowed in school. If a student is found to be chewing on school premises, she will have her conduct card signed and will get an automatic one hour detention with a member of the Leadership Team. Please support the school by ensuring your daughter does not bring chewing gum into school and please do not bring chewing gum into school yourself if you are visiting.

Thank you for your continued support.



Sanctions to be applied:

- ◆ If a student is caught chewing in school, she will have her conduct card signed and will get an automatic one hour detention.

Ms K.H.Pratt
Assistant Headteacher
December 2018

Jack Petchey's "SPEAK OUT" Challenge!

Earlier this week, *Khadijah* 10C represented WSFG at the Jack Petchey SpeakOut Waltham Forest Regional final 2018.

There were 17 secondary schools in total represented at the event, which was hosted at Buxton School.

Waltham Forest Regional Final 2018

Khadijah did a fantastic job with her speech, entitled 'Brace Yourself'. Although she didn't get through to the national final, *Khadijah* said she really enjoyed the experience.

Staff and students, when you see *Khadijah* please do congratulate her on her achievement. She did the school proud!



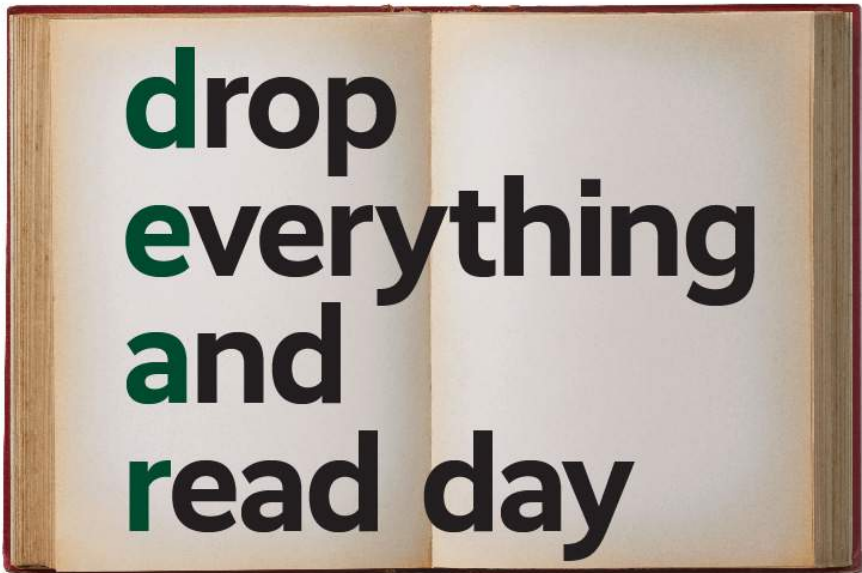
Mrs Tracy Jean-Baptiste
Year 10 Student Progress Leader
& Accelerated Reader Co-ordinator

Excellent news well done to *Khadijah*-it is such a daunting experience speaking in front of a hall full of other students, parents, teachers and judges!

Ms Davies
Headteacher



Monday 10th December is



All students in Years 7 to 10 read a book.
Teachers and students reading together.
10-15 mins reading in periods 1, 2 and 3.



WSFG Diversity Calendar for the Month of December



December 2018



Monday	Tuesday	Wednesday	Thursday	Friday	Saturday	Sunday
					1	2
3	4	5	6	7	8	9
10	11	12	13	14	15	16
17	18	19	20	21	22	23
24	25	26	27	28	29	30
31						

December is a Universal Month for Human Rights | Spiritual Literacy Month | December

☉ Last Quarter ● New Moon ☾ First Quarter ☀ Full Moon

Special Days

- 1st World AIDS Day
- 2nd International Day for the Abolition of Slavery
- Advent Sunday - Christian
- 3rd International Day of Persons with Disabilities
- Chanukkah - Judaism
- 6th Saint Nicholas' Day - Christian
- 8th Feast of the Immaculate Conception - Christian
- 9th Sukkot (Buddhism) - Buddhist
- 9th International Anti-Corruption Day
- 10th Human Rights Day
- 12th Feast Day of Our Lady of Guadalupe - Catholic/Christian
- 18th International Migrants Day
- 20th International Human Solidarity Day
- 21st Winter Solstice
- Yule - Yule - Wicca/Pagan/Worship and Earth/Earth/Earth
- Yule - Christian
- 24th Christmas Eve - Christian
- 25th Christmas Day - Christian
- Saint Holiday - England, Wales, Scotland, Northern Ireland and ROI
- Feast of the Nativity - Orthodox/Christian
- 26th Saint Stephen's Day - Christian
- Boxing Day
- Saint Holiday - England, Wales, Scotland, Northern Ireland and ROI
- Saints' Day (Death of Joseph) - Zoroastrian
- 28th Holy Innocents - Christian
- 30th Feast of the Holy Family - Catholic/Christian
- 31st New Year's Eve/Hogmanay
- Walsh Night - Christian

All Jewish holidays begin at sundown on the evening before.

Faculty News

English

Young Reporters.

Our budding reporters have been busy developing their journalism skills and have produced several articles so far. Read what they have written in their most recent article: Ms Simpson

Many residents were alarmed by the sound of a multitude of police cars passing their houses, in the direction towards Walthamstow central around 5 pm on Tuesday.

At the station, many policemen and women cleared the area as an evacuation message repeated from the speakers set up around the station. People just returning home from a day's work, had no idea why the station had been cleared, and the many police cars parked in the station would have caused confusion for most.

"I was returning home from a normal day's work and to see policemen and women shouting for everyone to leave was a shock. To be honest I was scared" a 21 year old woman tells 'This is London'. "I've never seen such a ruckus since I moved here".

Many people waited at the outskirts of the station, phones out and filming the situation as others waited in anticipation for an answer to the events that unfolded that day. Some also commented on twitter, confused at what actually happened at Walthamstow bus station.

It has been reported that Walthamstow station closed as a result of a brawl between teenagers. Many police officers attended in an attempt to break up the fight and control the public.

Resident MP Stella Creasy commented on the situation on twitter stating the following: "Furious to hear there is a fight outside Walthamstow Central station - will be following up with police but please stay clear of area for now."

Kitty and Crystal Year 10

Further reports can be found on the following links

<https://www.thisislocallondon.co.uk/youngreporter/17216081.the-beauty-of-community-by-iris-zaganjori-walthamstow-school-for-girls/>

<https://www.thisislocallondon.co.uk/youngreporter/17192617.author-talk-with-barbra-ellis-by-amud-ahmed-walthamstow-school-for-girls/>

<https://www.thisislocallondon.co.uk/youngreporter/17192589.organic-food-by-safa-tariq-walthamstow-school-for-girls/>

<https://www.thisislocallondon.co.uk/youngreporter/17187222.learning-languages-by-ying-hang-zengwalthamstow-school-for-girls/>

P.E.

The Year 9 and 10 handball teams played against Lammas School, Holy Family Catholic School and Normanhurst School at home this week. The Year 9 team came 3rd, and the Year 10 team came 2nd. Congratulate to all the students the students involved!

Year 10 team

Deepthigaa 10H
Aini 10W
Javairia 10W
Victoria 10W
Olivia 10G
Amna 10W
Sabrina 10F
Saray 10C
Chaira 10G
Shani 10H
Junnat 10H

Year 9 Team

Molly 9G
Sylive 9F
Rebecca 9F
Jaiming 9F
Arani 9F
Sabina 9G
Rachel 9F
Grace 9G
Adjoa 9G
Saffia 9G

Ms Wood
 Head of P.E.

**College Roadshow at WSFG
 Thursday 13 December 2018:
 6 to 7:30pm**

During this term, students in Year 11 will be receiving information about continuing their education after they leave this school. Most of our students choose to go to colleges/sixth form schools to extend their skills and qualifications. At the present time the number of job vacancies for school leavers is small. Employers increasingly prefer applicants with a good variety of skills, abilities and interests, and continuing education is an important way of increasing these.

Our College Roadshow is an excellent opportunity to meet and discuss options with established providers of A Levels, BTECs and Apprenticeships. Currently we have 28 stall holders attending to offer guidance and information about courses, University options, GCSE requirements and job opportunities for Post 16 year olds.

We hope as many students as possible, accompanied by their parents/carers, will attend this unique event.

Mr Shackson
 Assistant Headteacher

SIXTH FORM /COLLEGE LUNCHTIME LECTURES AT WSFG 12.40 -1pm

Tuesday 4 December

London Screen Academy

Wednesday 5th December.

The National College for Digital Skills

School History

Iris 1958

Science Society

During the past year the Science Society organised several meetings. There was the annual Fungus Foray, the Third Form's made bath salts, there was a Third Year v. Fourth Year General Scientific Knowledge Quiz, Miss Glasspool arranged a competition, a party visited Hitchman's Dairies to see how milk is tested, pasteurized and bottled and Mr Noakes gave a lecture on "The Properties of the Electron."




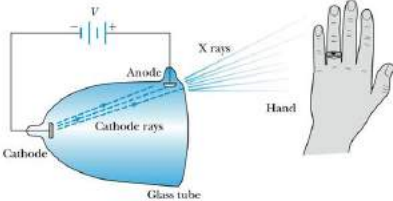
Hitchman's Dairies

Mr Noakes showed in his lecture how electrons produce fluorescence in a tube at low pressure. The production and properties of Roentgen and cathode rays were also demonstrated by a series of impressive experiments. A large audience found the lecture very interesting, and look forward to its sequel this session.

Gillian Oxley, VI.

Röntgen's X-Ray Tube





The diagram illustrates the setup of an early X-ray tube. A glass tube contains a cathode and an anode. A battery (V) is connected to the cathode. Cathode rays are emitted from the cathode and strike the anode. This process produces X-rays, which are shown passing through a hand, creating a shadowgram on a phosphorescent screen.

Röntgen constructed an x-ray tube by allowing cathode rays to impact the glass wall of the tube and produced x-rays. He used x-rays to make a shadowgram the bones of a hand on a phosphorescent screen.



C.J.CATERING AND TRAINING

Master Class One Day Short Course

(NEW DATES FOR DECEMBER)

Open to students, parents/carers and staff

- Course 1 **BREAD BAKING CLASSES £25.50**
 or
 Course 2 **PASTRY CLASSES £29.50**

Our classes are fun, relaxed, informative and interactive. Whether you are a beginner or have more experience come along and let our chefs guide and inspire you and boost your confidence.

The courses include

- Understanding different types of YEAST (dried and fresh) or PASTRY
- Using sight, smell and touch to guide your dough/pastry making
- Baking two different styles of bread dough (including brown and Italian bread dough)
- Baking three different styles of desserts (including a sponge base, short crust pastry, Viennese biscuits and choux paste)

What is included

- All ingredients (the food is yours to take home)
- A kitchen apron will be provided (please hand in at the end of the session)

What you need to bring

- Flat soled shoes
- Long trousers and a long sleeved top

When

Course 1 Saturdays 9.30am-11.30am or 12-2pm
01, 08, 15 December 2018

Course 2 Saturdays 9am-12pm or 12.30-3.30pm
01, 08, 15 December 2018

Where

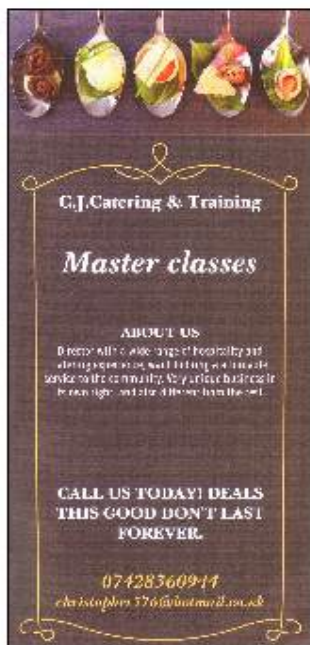
Walthamstow School for Girls, Church Hill
 E17 9RZ

To sign up please contact Christopher

Mob: 07428360944

Email: christopher576@hotmail.co.uk

Cash or Card payment accepted on the day



Year 11 information



Merchandising for Fashion



Level 4 Merchandising

Level 4 Merchandising is a one-year course which will equip students with all the commercial and analytical skills and knowledge they'll need to succeed in a career in merchandising. The course is taught by industry specialists and combines theoretical learning with hands-on placements, workshops and masterclasses.

A Fashion Merchandising Career...

Merchandisers are key to every life cycle of a garment, and this field is a varied, pivotal and exciting one to be in. They'll be sitting right at the heart of the action, at the intersection of business and creativity, deciding how to sell products to customers.

There is currently a huge industry demand for merchandisers, with salaries of up to 65k.

Next Open Day: Saturday 12th January 2019

The day starts with an interactive workshop on a chosen subject and is followed with a presentation which includes an overview of all courses and the benefits of our exclusive relationship with the fashion industry.

Students will also have a chance apply on the day. They will need to provide details of current/predicted grades.



Fashion Retail Academy, 15 Gresse Street, London, W1T 1QL, United Kingdom
Email events@fra.ac.uk or call 0300 247 4000



**Carol Concert
Tuesday 18 December
St Mary's Church
Church End
Walthamstow
6.45 for 7pm start**

Featuring the steel pan bands, the choir
and orchestra.

All parents, carers, students, staff,
governors and alumnae are warmly invited



eat or heat Christmas Collection

Dear Parents/Carers, students and staff

This year we will be collecting donations to support our local foodbank, “Eat or Heat”, for Christmas. They are really busy this year with a high rate of referrals and need our help more than ever. Items urgently needed include ...

Accepted Items:				
Large and Small Boxes of Cereal	Canned soup	Canned spaghetti	Canned fish	Canned meat
Canned tomatoes	Canned potatoes/Instant mash	Canned vegetables	Canned fruit	Canned dessert
Sugar	Long Life milk / Milk Powder	Teabags	Instant Coffee	Pasta Sauce
Squash	Porridge	Pulses	Kidney Beans	Chick Peas
Pasta	Rice	Couscous	Noodles	Cooking Oil
Soap	Shower Gel	Tooth Brush	Tooth Paste	Shampoo
Razors	Sanitary Towels	Tampons	Washing Powder/Tablets	Baby food
Nappies	Dog food	Cat food	Flour Self-raising and plain	Men's toiletries

Additional items for the festive season, the following treats ...

Christmas puddings

Christmas crackers

Mince pies

Sweets/chocolates

Biscuits



There will be collection points in each tutor room and the front foyer until **Wednesday 12 December**



Thank you in advance for all your kind donations.

The Eat or Heat Team
Ms Dowling, Ms Hayns, Ms Winter

Community Events

Saturday 1 December, Leyton&Stone Designers' Christmas Market, Leytonstone Library, 6 Church Lane, E11 1Hg. 22 stalls of gifts cards and seasonal treats from local designer/makers. 11am-4pm Free. Leytonandstonedesigners.co.uk

Sunday 2 December, E17 Designers' Christmas Market, Waltham Forest Community Hub, 18a Orford Road, E17 9LN. 30 designer/makers, 2.30-5.30pm Free e17desingers.co.uk

Sunday 9 December, Hoe Street Market, Walthamstow Trades Hall, 61-63 tower Hamlets Road E17 4RQ. Shop for Christmas and support local artists, makers and bakers, 12-5pm free.

Tuesday 11 December, Walthamstow Village Carols, Village Square, corner of Orford Road and Eden Roads, E17 9NJ. Carols around the Christmas tree with East London Brass Band. 7.15-8.30pm free donations welcome. walthamstowvillage.net

Monday 17 December Christmas Carol Concert, St Mary's Church, Church End, E17 9RL. Doors 7.45 8-9pm free. Stmaryswalthamstow.org

Sunday 23 December Carols By Candlelight, St Mary's Church, Church End, E17 9RL. 7-8.15pm Free. Londonforestchoir.org

GNOME HOUSE
WINTER WARMER
Saturday 15th December 2018
 Doors open 12pm – 7pm
 Carols + Father Christmas + Coffee + Beer
 Snacks + African Drumming + Art Exhibition
 Arts and crafts activities for children -
 Face Painting and more!
 7 Blackhorse Lane, Walthamstow E17 6DS
 (3 min walk from Blackhorse Road Tube Station)
www.gnomehouse.org.uk @gnomehouseCIC

MBILLA ARTS
 MUSIC DANCE STORYTELLING
PERKY BLENDERS
MARLI'S KITCHEN
LEFT BANK BREWERY
INKY CUTTLEFISH STUDIOS
THE FESTIVE PROGRAMME ALSO INCLUDES:
12.00pm
 Doors opened by Father Christmas
12.45pm
 Christmas Carols by the **Roger Ascham Primary School Choir**
1.15pm
 Tree planting with Father Christmas in our new garden
1.30pm
 Meet Father Christmas
1.45pm
Mbilla Arts CIC African Drumming Circle Plus an opportunity to use the drums after the performance (with Father Christmas).
GNOME HOUSE
 Design: www.ellbow-creations.co.uk

Gnome House Winter Warmer - Sat 15 Dec



**Please join us on Saturday 15th December 2018
for our annual 'Winter Warmer.'**

Time: 12pm – 7pm

Location: 7 Blackhorse Lane, E17 6DS

Carols – Father Christmas – Coffee from Perky Blenders

Craft Beer from Left Bank Brewery

Sweet and Savoury Vegan Snacks from Marli's Kitchen

African Drumming – Art Exhibition

Arts and crafts activities for children

Face Painting and more!

The festive programme also includes:

12.00 Doors opened by Father Christmas

12.45 Christmas Carols by the Roger Ascham Primary School Choir

1.15 Tree planting with Father Christmas in our new garden

1.30 Meet Father Christmas

1.45 Mbilla Arts CIC African Drumming Circle. Plus an opportunity to use the drums after the performance (with Father Christmas)

School Calendar Dates 2018-2019

Autumn Term 2018

Monday 3rd September to Friday 21st December 2018

Monday 3rd December	Staff inset day school closed to students
Thursday 6th December	Presentation Evening
Tuesday 11 th December	Early school closure at 2.30pm for Community Party
Thursday 13th December	College roadshow 6-7.30pm Year 11
Tuesday 18th December	Christmas Carol Concert

Spring Term 2019

Monday 7th January 2019 to Friday 5th April 2019

Tuesday 9th January	Year 9 options evening
Thursday 31st January	Year 11 Parent/Carer subject evening 4.30- 6pm
Thursday 7th March	Year 9 Parent/Carer subject evening 4.30- 6pm
Thursday 21st March	Year 8 Parent/Carer subject evening 4.30- 6pm

Half Term: Monday 18th February to Friday 22nd February 2019

Summer Term 2019

Tuesday 23rd April 2019 to Friday 19th July 2019

May Bank holiday Monday 6th May

Thursday 9th May	Year 7 Parent/Carer subject evening 4.30- 6pm
------------------	--

Half Term: Monday 27th May 2019 to Friday 31st May 2019

Monday 13th May—Tuesday 18th June	GCSE Examinations Year 11
Monday 3rd June—Friday 28th June	Year 10 mocks