



# GREENSHEET



No. 28/20

Church Hill, Walthamstow, London, E17 9RZ

Telephone: 020 8509 9446

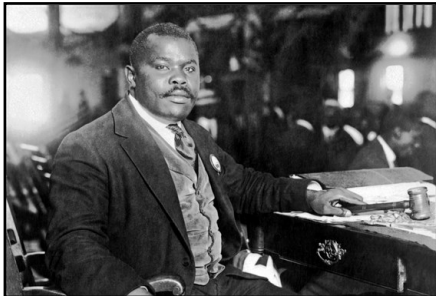
Email: [info@wsfg.waltham.sch.uk](mailto:info@wsfg.waltham.sch.uk)

Website: [www.wsfg.waltham.sch.uk](http://www.wsfg.waltham.sch.uk)

Student Absence Line: 020 8509 9444



21 May 2021  
Week 'A'

SCHOOL CALENDAR 2020-2021	CONTENTS	PAGE	CONTENTS	Page	
<b>Monday</b> <b>19 April 20</b> to <b>Thursday</b> <b>22 July:</b> Summer Term 2021  <b>Tuesday 1</b> <b>June to Friday</b> <b>4 June:</b> Half Term  <b>Tuesday 8 -</b> <b>Friday</b> <b>18 June:</b> Key Stage 3 Examinations Fortnight	Headteacher's Message	1-3	Junior Maths Challenge	8	
	Parent Carer Information	4	School History	9	
	Global Day of Diversity	5	Olive Dining	10-12	
	English Writing Competition	6	Community Events	13-15	
	English Opportunities	7	School Calendar 20/21 -& 21/22	16	
	<b>Headteacher's Message</b>				
	Dear Parents, Carers and Students				
<b>Cultural Diversity Day</b>					
<p>Marcus Garvey famously said:  <b>"A people without knowledge of their past history, origin and culture is like a tree without roots."</b></p>					
					
<p>I have always felt that it is vital that students have an in-depth knowledge of their heritage, through language, dialect, shared family history, stories and research. Today's 'United Nations Day of Global Diversity' at WSFG has provided our students with an opportunity to explore their cultural heritage and to share an appreciation of identity and difference. It has been lovely to see students and staff wearing a range of outfits and national costumes, as you will see from the photographs below.</p>					



I have been wearing the colours of the Derbyshire flag (blue and green), I've carried a cuddly ram around school and have worn the Derbyshire flag on my back. This has confused most people but it's made me happy!

The UNESCO website describes the World Day for Cultural Diversity for Dialogue and Development as "an occasion to promote culture and highlight the significance of its

diversity as an agent of inclusion and positive change". There are more details on the website here:

<https://en.unesco.org/commemorations/culturaldiversityday>

Ms Kelly, our librarian, tells me that the school has a long association of campaigning for peace. In the 1931 Iris magazine, it was recorded that the school formed a School Branch of the League of Nations Union, 'because we are convinced that the solution of the world's difficulties will only be found through international good-will and that the future of the League of Nations depends on the good-will of the rising generation'.

I look forward to building on this tradition through our 'Campaign for Peace' group when students present their ideas to us next week, as I explained in my letter to you yesterday.

It is wonderful that, despite the difficulties of the last few months, our students have had the energy and initiative to suggest this event. Thank you to Ms Jean-Baptiste and the BAME student group for organising our Cultural Diversity Day.



**Face Coverings**

Thank you to all parents and students for your support in our continuation of face coverings in communal areas. You will be aware that social distancing is more challenging in these areas, therefore creating a greater risk to the community. Students may continue to wear masks in lessons, if they choose to do so. They should continue to bring a clean mask to school every day, unless they have an exemption badge.

In the light of recent news about the increase in transmission rates and new COVID-19 variants, we may need to review our plans and procedures as to whether or not face coverings will be required after half-term. Please be assured that I will be keeping a close eye on local and national information.

We are very proud of the fact that we have had no positive student cases since January and we would like to maintain this record. If I feel it is necessary for students to wear face masks again in classes, I will inform you of my decision. Our priority is ensuring that we keep everyone in our community as safe as possible.

**Asymptomatic Testing**

Another measure which has helped to keep us all safe has been the introduction of asymptomatic testing for staff and students in schools. However, the local authority has reported a decline in numbers who are taking tests and reporting results. Please could you impress upon your child the importance of regular testing and ensure that they report their test results online.

**Olive Dining**

We are pleased to inform our school community that following a revisit by the Local Authority Environmental Health Officer, Olive Dining have been awarded a 4-star rating. Please see page 10 for more details.

Wishing you a restful weekend



Ms Marriott  
Headteacher

## Covid Testing

We would like to remind parents and carers that the lateral flow tests we provide are only for people with NO symptoms.

If your child has symptoms, such as a cough, cold, temperature, then you will need to have a PCR test and let the school know the result.

See website link for further information on the different tests for Covid19 :

<https://www.nhs.uk/conditions/coronavirus-covid-19/testing/get-tested-for-coronavirus/>

Ms Snowsill  
Deputy Headteacher



**IN A HURRY, PLEASE  
RETURN YOUR BOOKS  
TO THE BOX IN THE  
STUDENT RECEPTION.**

**MRS KELLY, LRC.**

## Global Day of Diversity

Students and staff celebrating UNESCO's Global Day of Diversity by dressing in a cultural outfit relating to their identity or a culture they have an affinity with.





## English Opportunities/Events

Linton Kwesi Johnson: New Craas Massahkah at the Southbank Centre  
(Free - in person event - 22 Jun – 29 Aug)

Linton Kwesi Johnson is an award-winning poet who was born in Jamaica and came to London in 1963.

In an outdoor audio installation, the poet reads his 1981 poem commemorating the deaths of 13 young people in a house fire in New Cross, south-east London.

If you want to find out more information about the event, please visit the website:  
<https://www.southbankcentre.co.uk/whats-on/art-exhibitions/linton-kwesi-johnson-new-craas-massahkah?eventId=872894>

### Year 11 Students

If you are planning to study English Literature at college, you might be interested in attending this free online event:

‘Newham Word Festival’ is celebrating London’s emerging women writers on **Friday 25 June, 7pm**

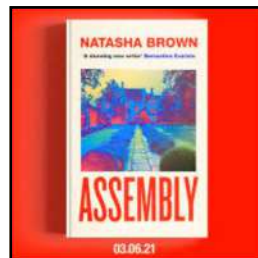
Women writers included:

Natasha Brown (*Assembly*)

Abi Daré (*The Girl with The Louding Voice*)

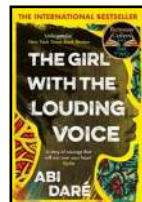
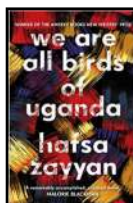
Catherine Menon (*Fragile Monsters*)

Hafsa Zayyan (*We are all Birds of Uganda*)



Please visit the website for more information:

<https://www.newhamwordfestival.org/events/headline-event-voices-for-a-new-generation-online/>



Ms Simpson  
English Faculty

## WSfG Junior Maths Challenge 2021

Some of our Year 7 and 8 classes took part in our in-house Junior Maths Challenge; a multiple-choice competition that encourages mathematical reasoning, precision of thought, and fluency in basic mathematical techniques to solve puzzles.

Well done to everyone who took part; we had many bronze, silver and gold certificate winners.

A big congratulations to *Anokshe* in 8S and *Isla* in 7C, who were our best in their year!

Why not challenge yourself at home using past Junior Maths Challenge papers, solutions to which can be found on the UKMT website below:

<https://www.ukmt.org.uk/competitions/solo/junior-mathematical-challenge/archive>

Until next year, happy puzzle solving!

Miss Kelly  
Maths Faculty



### Puzzle of the Week

Here is the link to this week's puzzle: <http://www.puzzleoftheweek.com/>

160  
Puzzle  
Number

**PUZZLE OF THE WEEK**

Entries open: Mon 17th May

Entries close: Sun 23rd May



Aisha has strip of paper with the numbers 1,2,3,4 and 5 written in 5 cells.



She folds the strip along each cell line so that the cells overlap forming 5 layers, but always keeping the number 3 on top.

For example, reading the numbers top to bottom, Aisha could put the numbers in the order 3,4,5,2,1.

**How many different ways can Aisha order the numbers top to bottom?**

**Extension:** [Click here](#) to see a puzzle about folding so numbers are in order.

Good luck!  
Maths Faculty



## School History

Here are the thoughts from a student, written in the *Iris* in December 1925 about art. Mary has also added something about music, '*crawling, whining, popular songs*', as opposed to '*healthy songs and music*'. I wonder what she meant?

Mrs Kelly  
LRC

## The Necessity of Art

*To many people the word 'art' conveys only a thought of symphony concerts and picture galleries to be indulged in by those who have the time, money and inclination; but art is a necessity, not a luxury. Its aim is always that of expression in terms of beauty, for 'the highest cannot be spoken,' and so it uses form, colour, proportion and harmony to express itself. Art is the sole means of handing down to posterity the beauty and meaning of life, for only the really artistic things survive the ages; all else is lost in time.*

*There is no question of ugliness in Nature's world; everything is beautiful, and when we surround men with artificial ugliness we take away a precious gift. Character depends a great deal on the things seen during life and if people grow up accustomed to ugliness their whole attitude towards mankind will be warped and sordid. As long as unsightly buildings, stupid inane posters and crawling, whining, popular songs remain we are not an artistic race.*

*It is extremely important that art should play a greater part in the home than it does at present, but first, more artistic houses must be built. If the exterior were beautiful, it would follow that most people would wish to make the interior equally attractive. Much could be done to improve the indoor decorative schemes, with brighter and more beautiful wall-paper and good pictures glowing with colour to adorn and not cover the walls. Healthy songs and music fill the home with joy and harmony and books will "charm magic casements" in boundless fairy lands.*

Mary Selway (Form U. IVa.).



## **Foods Safety & Management Score**

Olive Dining at WSfG are delighted to announce that following a revisit of the catering operation this week by the Local Authority Environmental Health Officer we have been awarded a 4-star rating following the remedial actions that were recently taken. This is the highest score that can be awarded during a short-notice revisit inspection and we are confident that the next annual full inspection will achieve a score of 5 stars.

Olive Dining are committed to working with the school to ensure the highest standards of food safety when creating and serving food for your daughters. I wish to assure parents and carers we will ensure a regular regime of internal management audits are carried out in addition to the local authority inspections, so that the recent shortcomings highlighted are not repeated.

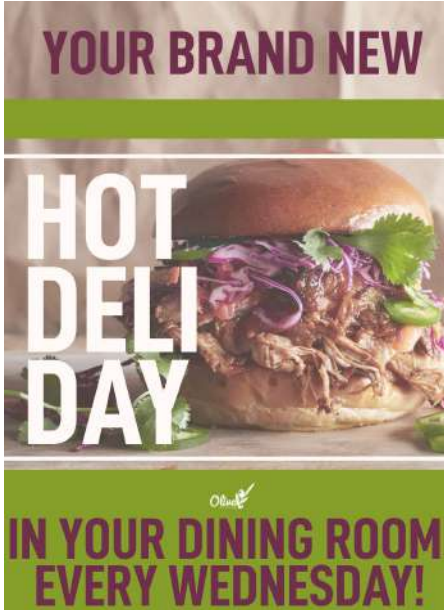
We are committed to providing menus and dishes using only the freshest ingredients, prepared with care and attention, and look forward to working with the student Food Focus group and School Council to help develop our menus for the next academic year.

If you have any specific questions about the management of the catering service at Walthamstow School For Girls, please do not hesitate to contact me.

Kind Regards

Stephanie Spratt  
Managing Director  
Olive Dining  
07584247450

## Olive Dining Summer Term Menus



The cost of a school meal is £2.30 .

A reminder to parents and carers that if you wish to pay for your child's school meals by cheque, please make the cheque payable to 'Olive Dining Ltd'.

Olive Dining are very excited to announce the launch of Hot Deli Day. Our Development Chef Team have been working on this new concept which will take place every Wednesday, replacing the roast option for the Summer term.

THE OLIVE MENU — SUMMER MENU — WEEK 1					
MEAL DEAL					
SPINACH MAY		RASPBERRY JUNE		COGNAC JULY	
WHAT'S IN SEASON					
	MON	TUES	WED	THURS	FRI
MAIN	Roasted Vegetable Lasagna, Garlic Bread & Soft Salad (ICE, G, MK)	Turkey, Lamb & Mushroom Pie with Creamy Mash (ICE, E, G, MK)	Hot Deli	Chicken Tikka Masala with Pilau Rice (MG, MK)	'Caulif of the Day' with Chips & Tartan Sauce (E, F, G, WH)
VEGGIE	Potato Fritata with Tomato & Red Pepper Curry (G, E)	Roasted Quorn and Vegetable Loaf (ICE, E, G, MK)	Hot Deli	Red Onion Quiche (E, G, MK)	Lasagna Bolognese, Tiramisu, Biscuits & Sour Cream (ICE, MK, WH)
COOK STATION	Fish Tacos with Bean Sauce & Lime Spiced Sauce (E, G, MK)	Sticky Kebab Chicken Skewers, Kimchi Slaw, Sesame Wedges & Chilli Sauce (ICE, E, G, MK)	Veggie Kahl Sabo (V, SO, SIO)	Turkish Beef Goulash (E, SO, MK)	Chilli Dressing
PUD	Peach Upside Down Cake with Vanilla Sauce (E, G, MK)	Lemon Sponge & Custard (E, G, MK)	Banish Apple & Coconut Cullenis with Custard (E, WH)	Bread & Butter Pudding (E, G, MK)	Chocolate & Orange Cake with Chocolate Sauce (E, G, MK)
COLD SELECTION: BAGUETTES • SANDWICHES • SALAD BOXES • FRESH FRUIT • YOGURT POTS					
ALLERGENS KEY	GL - GLUTEN D - DAIRY E - EGGS	F - FISH C - CELERIAC L - LUPIN	MG - MILK MK - MOLLUSCS MS - MUSTARD	P - PEANUTS S - SESAME SEEDS	NO - NONE NS - NOT SUPPLIED
Go Vegan					

## THE OLIVE MENU

### SUMMER MENU

#### WEEK 2

MEAL DEAL

SPINACH  
MAY

RASPBERRY  
JUNE

COURGETTE  
JULY

WHAT'S IN SEASON

	MON	TUES	WED	THURS	FRI
MAIN	Hot Stir Vegetable Stir-Fry with Egg Fried Rice (E, G, SC, SD)	Butcher's Choice Sausage & Mash with Onion Gravy (G, MK, SD)	Hot Dill	Spaghetti Bolognese with Garlic Bread (G, MK)	"Catch of the Day" with Chips & Tartar Sauce (E, F, G, MK)
VEGGIE	Roasted Winter Vegetable Pasta with Tomato Sauce (E, G, O)	Chicken, Aubergine & Bell Pepper Kasha Curry with Spiced Rice (E, G, MK, SD, SU)	Hot Dill	Vegetable Taglio topped with Quinoa (E, G, MK)	Spiced & Toasted Empanadas with Tomato Sauce (E, G, MK)
COOK STATION	Vegetable Hot Dish, Caramelized Onions & Seasoned Veggies (G)	Tandoori Chicken Legs, Spiced Rice & Raita (E, G, MK)	Spicy Lamb Korma (G, MK, MU)	Chicken & Roasted Vegetable Sheen Kebab with a Warm Wrap & Sweet Chilli Mayo (E, G)	Chef's Choice
PUDD	Caramelized Pomegranate & Pizzly Seed Cake with Vanilla Sauce (E, G, MK)	Jam & Caramel Sponge with Custard (E, G, MK)	Apple & Cinnamon Crumble with Custard (E, MK)	Banana & Cranberry Spagetti with Caramel Sauce (E, G, MK)	Chocolate Brownie with Chocolate Sauce (E, G, MK)

COLD SELECTION: BAGUETTES - SANDWICHES - SALAD BOXES - FRESH FRUIT - YOGURT POTS

**ALLERGENS KEY**  
 G - GLUTEN    F - FRUIT    O - OMEGA 3 OILS    MK - MILK    SD - SUGAR  
 E - EGGS    SC - SODIUM    L - LUPIN    MU - MUSHROOMS    SU - SUN-DRIED HERBS    SU - SUN-DRIED HERBS  
 O - OILS    G - GLUTEN    L - LUPIN    MK - MILK    MU - MUSHROOMS    SD - SUGAR    SU - SUN-DRIED HERBS

All students have also been given usernames and passwords to enable payments to be made online via our **SQUID** system (see the school website for details).

If you would like a reminder of your daughter's username and password, please contact the school.

Menus can also be viewed on the school website. Please note that all menus are subject to change.

Olive Dining

## THE OLIVE MENU

### SUMMER MENU

#### WEEK 3

MEAL DEAL

SPINACH  
MAY

RASPBERRY  
JUNE

COURGETTE  
JULY

WHAT'S IN SEASON

	MON	TUES	WED	THURS	FRI
MAIN	Penne Arrabbiata with Garlic Bread (E, G, MK)	Traditional Homemade Cottage Pie with Seasonal Vegetables (E, MK)	Hot Dill	Hot Chicken served with Rice & Peas (E, G)	"Catch of the Day" with Chips & Tartar Sauce (E, F, G, MK)
VEGGIE	Vegetable Borel & Tomato Bake (E, G, MK)	Butternut Squash, Chick & Onion Cheese Tart with Kale Pesto (E, G, MK)	Hot Dill	Spiced Chicken & Roasted Aubergine Flatbread with Green Herb Sauce (E, G, SD)	Three Cheese Macaroni (E, MK)
COOK STATION	Mexican Bean Burger with Salsa & Guacamole Waffles (G)	Spanish Chicken Leg with Vegetable Pasta (G, MK)	Turkish Lamb, Corn & Potato Couscous Curry with Seasonal Rice (E, MK, MU)	Key West, Slow Cooked Ethiopian Shredded Beef with Onions (E, G)	Chef's Choice
PUDD	Peach, Pear & Banger Pie with Custard (E, G, MK)	Chocolate Orange Pudding with Chocolate Sauce (E, G, MK)	Apple & Fruits of the Forest Crumble with Custard Sauce (E, MK)	Sicilian Lemon Polenta Cake with Vanilla Sauce (E, G, MK)	Snick's Toffee Pudding with Butterscotch Sauce (E, G, MK)

COLD SELECTION: BAGUETTES - SANDWICHES - SALAD BOXES - FRESH FRUIT - YOGURT POTS

**ALLERGENS KEY**  
 G - GLUTEN    F - FRUIT    O - OMEGA 3 OILS    MK - MILK    SD - SUGAR  
 E - EGGS    SC - SODIUM    L - LUPIN    MU - MUSHROOMS    SU - SUN-DRIED HERBS    SU - SUN-DRIED HERBS  
 O - OILS    G - GLUTEN    L - LUPIN    MK - MILK    MU - MUSHROOMS    SD - SUGAR    SU - SUN-DRIED HERBS

## BATTLE OF THE BANDS REMIXED ONLINE 2021

Bands, Solo performers, songwriters, producers aged 11-18 from Waltham Forest secondary schools are invited to represent their school or college at the annual Waltham Forest Battle of the Bands. The competition will be held online this year.

Winning performances in each category will be announced and shared by a panel of experts in a Youtube Live feedback session on **Wednesday 23rd June 2021**.

### Category 1: Overall Performance

This could be a cover version or an original song. It must be performed live by a band or solo artist (singer or MC).

### Category 2: Original Song: Live/acoustic performance or Electronic/Production

Entries can be either:

- A solo or group live performance.
- This can be a fully live performance or a performance to an original backing track.
- Any backing tracks must be original compositions written and produced by the entrants.
- Where electronically produced backing tracks are submitted, judges will give credit to production skills as well as composition and lyrics.

### Prizes

- Key stage 3: Record a live performance at LSC for the sharing event in June 2021 or record at LSC in Autumn 2021.
- Key stage 4-5: LCCM studio time and masterclass in the Autumn term 2021.

### How to enter

- **Step 1:** Tell your music teacher you plan to enter and ask them to help you prepare your entry
- **Step 2:** Submit your final video performances via WeTransfer to [music.service@walthamforest.gov.uk](mailto:music.service@walthamforest.gov.uk)
- **Step 3:** Send us an email to look out for your video with the subject line 'WF Battle of the Bands', state your school name, performer/writer names, song name, school year and the category you're entering.

### Deadline for video submissions: Monday 7th June 6.00pm 2021

Videos must be a maximum of three minutes in duration and video file sizes must be no larger than 2GB.

### Zoom feedback sessions

Need some feedback on your performance or song before the final deadline? Submit a work in progress and contact [music.service@walthamforest.gov.uk](mailto:music.service@walthamforest.gov.uk) to register for a feedback surgery Zoom call. Just type 'WF Battle of the Bands feedback' into the email subject line.



## Year 11 Opportunity Virtual Work Experience—Wednesday 2nd June



**sky** Summer Virtual Work Experience 2nd June 2021

- Come behind the scenes at Sky and see what it's like to work at Europe's biggest entertainment brand
- Sky offers top quality shows. Innovative tech. Must-have packages. With 24 million customers across six countries! Be part of it all!
- Career opportunities nationwide in; Business, Technology, Digital Marketing, Finance, Technical Engineering & Customer Services
- Open to all students 16 - 24

To secure your place this summer and have something great to add to your CV apply via the link provided!

After our successful **Insight Evening with Sky** a few weeks ago we have managed to secure a work experience opportunity for students to take part in this summer half term.

This will be one of the only opportunities for students to get involved with over the summer and as such places are very limited.

Applications for the Sky Virtual Work Experience are now live.

### Key Details:

- Come behind the scenes at Sky and see what it's like to work at Europe's biggest entertainment brand.
- An opportunity to see the different departments they have from Tech, to TV Production to Customer Service!
- Learn from leading industry professionals and take part in some projects / workshops designed by Sky.
- Sky offers top quality shows. Innovative tech. Must-have packages. With 24 million customers across six countries! Be part of it all!
- Career opportunities nationwide in; Business, Technology, Digital Marketing, Finance, Technical Engineering & Customer Services.
- Open to all students 16 - 18 (Y11 / S3 & 6th Form).

An opportunity to be fast tracked to an in person event at the Sky offices when the time is right and safe to do so.

**Application link:** <https://www.surveymonkey.co.uk/r/Sky-VWEX>

If you are interested and would like the opportunity please do book on ASAP as we do have very limited spaces.

## Community Events

# London Forest Choir

## Dates for your diary



Friday 24 September 2021 LFC and Friends concert

Saturday 20 November 2021 The Art of Song

Thursday 16 December 2021 Christmas concert  
 (including Rathbone's Carol of the Holy Boy and carols from around the world)

Saturday 26 March 2022 Duruflé Requiem

Saturday 16 April 2022 Stainer The Crucifixion

Saturday 2 July 2022 Handel Israel in Egypt

All venues and times to be confirmed.

[www.londonforestchoir.org](http://www.londonforestchoir.org)

### **School Calendar Dates for 2020-2021**

#### **Summer Term 2021**

- Monday 19 April 2021 to Thursday 22 July 2021
- **Half Term:** Tuesday 1 June 2021 to Friday 4 June

Tuesday 8<sup>th</sup> June - Friday 18<sup>th</sup> June: Key Stage 3 Examinations Fortnight

### **School Calendar Dates for 2021-2022**

#### **Autumn Term 2021**

- Wednesday 1 September 2021 to Friday 17 December 2021

Wednesday 1 September: Staff INSET/School Closure

Thursday 2 September: Term starts for ALL years (Y7/8/9/10/11)

- Half Term: Monday 25 October 2021 to Friday 29 October 2021
- Winter Holiday: Monday 20 December 2021 to Friday 3 January 2022

#### **Spring Term 2022**

- Tuesday 4 January 2022 to Friday 1 April 2022
- Half Term: Monday 14 February 2022 to Friday 18 February 2022
- Spring Holiday: Monday 4 April 2022 to Monday 18 April 2022

#### **Summer Term 2022**

- Tuesday 19 April 2022 to Tuesday 19 July 2022
- Half Term: Monday 30 May 2022 to Friday 3 June 2022.