



GREENSHEET



No. 01/20

Church Hill, Walthamstow, London, E17 9RZ

Telephone: 020 8509 9446

11 September 2020

Email: info@wsfg.waltham.sch.uk

Website: www.wsfg.waltham.sch.uk

Week 'A'

Student Absence Line: 020 8509 9444



SCHOOL CALENDAR 2020-2021	CONTENTS	PAGE	CONTENTS	PAGE
Autumn Term	Headteacher's Message	1-3	Olive Dining Autumn Menus	12-13
Wednesday	Examination Results	4-5	Faculty News	14-17
2 September	COVID-19 Guidance	6-8	English News Young Reporter	14
to Friday	Parking Guidelines	9	Humanities Competition	15-17
18 December	Temporary Classrooms	10	TFL Travel Information	18-19
	Health and Safety Measures	11	School Calendar 2020-21	20
Half Term:	Headteacher's Message			
Monday	Dear Parents Carers and Students,			
26 October	This is the first edition of the Greensheet marking the new school year, and the full reopening of the school since March 20th. We celebrate this as a staff group and are delighted to see once more our bottle green clad eager students back on site, proudly bearing the school badge, in suffragette colours, which tracks our history as a school for girls founded in 1890.			
to Friday	We warmly welcome our new Year 7 students, as well as our new community of parents and carers, who will not have visited our school since our last Open Evening in October 2019.			
30 October	My whole school assembly for all years - in each of their 'bubbles' on their first and second day back - was carried out in our outdoor Greek amphitheatre. It was a truly significant event in the history of our school. Previous generations hosted Labour MP Clement Atlee who addressed the whole school in that forum, as well as Dame Sybil Thorndike, who played the role of Medea in 1925 when our amphitheatre was officially opened. We have celebrated many of our most significant events in that venue-and this week was no exception.			
Christmas holiday:				
Monday				
21 December				
to Friday				
1 January				
2021				
Spring Term 2021				
Monday				
4 January				
to Thursday				
1 April				
Half Term:				
Monday				
15 February				
to Friday				
19 February				

Normally, it is just our youngest and newest Year 7 entrants who are initially baffled by their new, and much bigger, environment. This year, uniquely in my long professional experience, we all had to do that in order to fully absorb all the additional measures to make everyone safe and allay anxiety. This is fundamental to enable learning to take place. We have included a few photographs of our safety measures in this issue-but I would also urge you to read our most recent [Autumn Risk Assessment](#), judged 'very good' by the borough's Health and Safety team.

We started the week on Monday with just our Year 7 students for their induction for most of the day, followed by Year 8 in the afternoon. Our youngest students were understandably a little nervous at first, but quickly picked up the protocol that all students now have to follow; entering at the allocated time for their year group, washing their hands on arrival, lining up, removing and storing any external masks, preparing new ones for wearing indoors, donning them before being escorted single file to their zoned classrooms by their teachers.

Year 9, 10 and 11 students returned for their induction on Tuesday. Seeing the girls arrive at secondary school for the first time, as well as seeing our current students as a cohort for the first time since March, was indeed a very moving experience for us all.

Well done to our students for adapting to our 'new normal' – you have demonstrated your GREEN skills of Growth, Resilience, Empathy, Energy and Newness so well!

Last month, it was our GCSE results day. Due to distancing measures, we were unable to celebrate in our usual fashion, however our results were extremely pleasing and remain consistent with the school's previous high progress and attainment measures which placed WSfG comfortably and consistently within the top 10% of all non selective schools in the country.

Congratulations to all our 2020 Year 11 students. They have had the most difficult and challenging of times, with the sudden and premature curtailment of their five years of studies with us plus the anxiety about their GCSE results. They are now settled on to the next stage of their studies with their post-16 options. We wish them all the very best. Their teachers are always here for them, and keen to hear their news.

This term we welcome several new members of staff. Mr Lee, an MFL Teacher, who also speaks Korean, also two new members of staff in our Science faculty: Mr Betts, an Astro Physicist, who spent some time with us before lockdown. Also, Ms Ali, a Biologist joins us from Tower Hamlets. Ms Rashid, from a girls' school in Hampstead, joins our Mathematics faculty. Ms Landon, who has been with us some time, became a permanent member of the English/Performing Arts Faculty. Finally, Ms Warren, SPL Year 10, has stepped up as Associate Assistant Headteacher in place of Ms Phillippou who is enjoying a period of maternity leave. We also said farewell to two colleagues who had been at WSfG for a number of years, Head of MFL, Ms Prieto who had taught at the school for thirteen years and English Teacher and former Head of English, Ms Rowan who was here for six years. We wish both members of staff the best for their future endeavours.

This has indeed been a unique and challenging year for all of us as a school community, and also for our families. However, from what I have seen this week, with everyone back in school with a determination to make this 'new normal' work, I know that that this year will be no less successful than any other. Together we will succeed in ensuring that each and everyone of our students is supported to grow and flourish-and 'Neglect not the Gifts' that are within us.

Meryl Davies
Headteacher



Year 7

Morning Line-up



Year Assemblies

Year 8

Year 9

Year 10

Year 11



SUMMER 2020 – GCSE RESULTS

On Thursday 20th August, the provisional GCSE results for this year were released. I am extremely proud of our students again this year, particularly given the circumstances – well done to them! So many of our students have achieved excellent (provisional) results and it is impossible to include all their names in the highlights that follow. I know that these students are, rightly, very pleased with themselves.

The following students attained 3 or more level 9 (or A* equivalent) grades

	Level 9	Level 8	Level 7	Other
<i>Khadijah</i>	9		1	
<i>Imaan</i>	8	2		
<i>Ayan</i>	8	2		
<i>Brianna</i>	8		2	
<i>V</i>	5	4	1	
<i>Mahima</i>	5	3	1	
<i>Aini</i>	5	3	1	Further Maths, AS level equiv: A
<i>Zalyka</i>	5	3	1	
<i>Olivia</i>	5	2	2	
<i>Elif</i>	5	1	2	Further Maths, AS level equiv: D
<i>Evie</i>	6	2		
<i>Amina</i>	4	2		
<i>Crystal</i>	4	2	2	Further Maths, AS level equiv: B
<i>Madiha</i>	4	4	2	
<i>Ying</i>	4	4	1	
<i>Ruby</i>	4	1	5	
<i>Hannah</i>	3	5	2	Further Maths: B
<i>Florence</i>	3	5	2	
<i>Becantie</i>	3	4	3	Further Maths, AS level equiv: C
<i>Chikara</i>	3	3	2	Further Maths, AS level equiv: A

	Level 9	Level 8	Level 7	Other
<i>Fatema</i>	3	3	4	
<i>Amy</i>	2	6	1	
<i>Amaarah</i>	2	5	2	
<i>Safa</i>	2	2	3	
<i>Aasiyah</i>	2	2	4	Further Maths, AS level equiv: D
<i>Gabriela</i>	2	1	5	
<i>Selma</i>	2	1	2	
<i>Tulin</i>	1	8	1	
<i>Isabel</i>	1	6	2	
<i>Maryam</i>	1	5	4	
<i>Ansa</i>	1	3	3	
<i>Eva</i>	1	3	1	
<i>Maya</i>	1	2	3	
<i>Nabia</i>	1	2	3	

35.05% of our students were awarded 9 to 7 grades (A* - A equivalent).

A number of other students also achieved exceptional results, including:

Five students who achieved one grade 9 alongside a variety of levels in their other subjects:

Kaynat, Anna, Keralie, Estelle and Menele

A total of forty four students achieved at least one grade 9 and four students achieved a grade 9 in eight or more subjects.

**Walthamstow School for Girls
GCSE August 2020**

'I am very proud of our students who have worked consistently well throughout their time at Walthamstow School for Girls. Teachers worked with great integrity to ensure that students were awarded fair and consistent grades based on their prior performance therefore the school has maintained its outstanding track record of progress and attainment'

Meryl Davies, Headteacher

Some of the many notable achievements include the following:

Imaan Ansar was awarded eight grade 9s and two grade 8s in her subjects. Since joining Walthamstow School for Girls in Year 7, Imaan has been a very conscientious student, consistently making exceptional progress across all her subjects and we are extremely proud of what she has achieved. Imaan has a lifelong ambition of pursuing a career in medicine and we know she will achieve this! We wish her well in the future!

Khadijah Hamdan is another student whose success we are extremely proud of. Khadijah has made excellent progress in her subjects, achieving seven grade 9s and one grade 7.

Brianna Gittens and Ayan Younis are both students in Year 11 who have shown a great level of commitment to their GCSE studies and have worked well at our school. Both girls achieved eight grade 9s and will be attending the colleges of their choice.

Ying Hang Zeng is an excellent student. We are very proud of her achievements: five grade 9s, four grade 8s and a grade 7. Ying Hang attended a prestigious summer school course at London School of Economics and is hoping to study maths at college. We wish Ying Hang the very best.

Olivia Scanlon Sanderson, Mahima Miah and V Mikolajczyk all achieved five grade 9s in their GCSEs.

Revised COVID-19 Guidance

The medical advice is clear: **you must self-isolate if you have coronavirus symptoms or live in the same household as somebody who does.** Do not send any of your children to school if any member of the family has symptoms.

The main symptoms of coronavirus are:

- ◆ high temperature – this means you feel hot to touch on your chest or back (you do not need to measure your temperature)
- ◆ new, continuous cough – this means coughing a lot for more than an hour, or three or more coughing episodes in 24 hours (if you usually have a cough, it may be worse than usual)
- ◆ loss or change to your sense of smell or taste – this means you've noticed you cannot smell or taste anything, or things smell or taste different to normal

For more information, please read the further [guidance on symptoms](#) and [guidance for households with possible or confirmed coronavirus \(COVID-19\)infection](#)

If anyone at a school becomes unwell with a new and persistent cough or a high temperature, or has a loss of or change in, their normal sense of taste or smell (anosmia), they must be sent home.

We must **all** follow the guidance, which we have summarised in the table below and which is applicable to all students, parents and staff:

1	What to do if a student has coronavirus symptoms
	<ul style="list-style-type: none"> • The student must stay at home and start a 10 day period of isolation. • Book a test as soon as possible. To do this visit the NHS website or follow this link arrange to have a test and then attend the new walk-in Covid-19 test centre based at the Stanley Roadcar park in Leyton, or call 119. • Do not go to a GP surgery, pharmacy or hospital unless it is an emergency
2	What will happen and what to do if a student's test is positive and shows they have coronavirus
	<ul style="list-style-type: none"> • If the test shows that a student has coronavirus, they will be contacted by text, email or phone and will be asked to provide information about the people they have been close to recently. • The student and all other members of their family must remain in isolation at home. • After 10 days if the student still has a high temperature, they must stay at home and away from people until they feel better. They can only return to school once they are well. • After 10 days if the student has only a cough and/or loss of sense of taste or smell they don't have to stay home and away from people any longer and can return to school. • Everyone else they share the house with must still stay at home for 14 days from the first day that the student felt poorly, even if they feel well themselves, or test 'negative' during this period. In this instance, a negative test does not erase the need, as a household member, to isolate for the duration of the statutory 14 day period, because they may not have developed the virus yet.

3	What to do if a student's test is negative
	<ul style="list-style-type: none"> • This means that the student is at low risk of having coronavirus. • Other members of the household can stop self-isolating. If the student feels well and no longer has symptoms similar to coronavirus, they can also stop self-isolating and return to school. If the student is unwell for a different reason, such as a cold or flu, they should remain at home and avoid contact with other people until they are better. When the student feels completely well, they can return to school.
4	What to do if someone a student shares their home with has coronavirus symptoms, and/or tests positive for the virus
	<ul style="list-style-type: none"> • If someone else living in the student's home (i.e. a parent, a sibling, or anyone else who lives in their home) has signs of coronavirus the student must stay at home and self-isolate for 14 days, whether they have coronavirus symptoms or not. <i>This is crucial to avoid unknowingly spreading the virus.</i> • If the student then starts to have coronavirus symptoms, they should stay at home and not meet up with other people for 10 days from when their symptoms started. In this instance, the student must also seek a test (see point 1 above).
5	How to get a test
	<p>Online using this link: https://www.gov.uk/get-coronavirus-test If you don't have access to the internet, you can get a test by phoning 119.</p> <p>If you reside in Waltham Forest, a new walk-in Covid-19 test centre is based at the Stanley Road car park in Leyton. Opening hours between 8.00am – 8.00pm and you will need to book an appointment/test: https://www.walthamforest.gov.uk/content/test-and-trace-what-you-need-know</p>
6	What to do if anyone in the student's household is contacted by the NHS 'Track & Trace' service
	<p>If you are contacted by 'Track & Trace' and receive advice that your child should self-isolate at home, you must inform the school immediately and follow the advice you have been given.</p>
7	Will my child receive work to complete at home during a period of isolation?
	<p>Teachers at WSfG will upload classwork to Microsoft Teams and students who are isolating at home will be asked to complete the work set.</p>



Although the vast majority of our students walk to school and use public transport, we understand that for certain members of our school community it is necessary for some of our students to be dropped off by car each morning and be picked up in the afternoon. However we would ask that parents or carers who drive observe the following:



1. It is illegal to park, or stop, outside of the school on the yellow zig-zag lines or those extending to the crossing. It endangers the lives of our students as cars pulled up by the side of the road reduce the visibility of drivers to see when children try to cross the road.
2. It is illegal to park in the pedestrianised area leading to St Mary's Church.
3. We would ask that parents do not do 'drop-offs' at the top of Church Hill Road. The constant stream of cars doing a turnaround at the top of that road not only frustrates our neighbours, but significantly adds to the poor air quality that our students, your children, then have to breathe in during the school day.
4. Please do not turn around using multi-point turns in the middle of Church Hill. This causes traffic to bank up and the idling and slow-moving cars add to the poor air quality that our school community, including your children, then have to breathe in throughout the day.
5. If you have no alternative but to bring your child to school by car, or to collect by car please arrange to do it at a distance from the school and in such a way that does not obstruct the surrounding roads, add to congestion and add to the air pollution. It is far better that your child walks the short distance each day and gets to breathe cleaner air during the day.
6. We have facilities on site for the safe keeping of bicycles and scooters— please encourage your child to use these greener means of transport-or walk!.

For any student with a disability or serious injury that prevents them walking even a short distance, by prior arrangement it can be organised for them to be dropped off at the school entrance.

Highway Code Rule **Rule 238** states

You **MUST NOT** wait or park on yellow lines during the times of operation shown on nearby time plates (or zone entry signs if in a Controlled Parking Zone). Double yellow lines indicate a prohibition of waiting at any time even if there are no upright signs. You **MUST NOT** wait or park, or stop to set down and pick up passengers, on school entrance markings when upright signs indicate a prohibition of stopping.



Temporary classrooms being installed



School Health and Safety Measures



Olive Dining Autumn Term Meal Price Increase



This is to inform you that the school meal price has increased by 5p to £2.30 from September 2020. In partnership with the school, we have tried to keep meal prices as competitive as possible. However, the Covid-19 pandemic has impacted on the food supply chain and this has led to higher prices in sourcing the food required for the daily menu offer.

The preferred method of payment for school meals is via the parental payment system **sQuid**. Parents and carers of new Year 7 students will receive their login details in September. Guidance on using the **sQuid** system can be found on the school website. In the meantime, new students will be able to use the cash loaders to top up their accounts for the first few weeks in September.

For existing parents and carers, If you would like a reminder of your **sQuid** username and password please contact the school via info@wsfg.waltham.sch.uk

The new menus can also be found on the school website.

Thank you
Olive Dining



THE OLIVE MENU

WEEK 1



APPLES
SEPTEMBER



ROCKET
OCTOBER



BUTTERNUT SQUASH
NOVEMBER



BRUSSEL SPROUTS
DECEMBER

WHATS IN SEASON...

MON

TUES

WED

THURS

FRI

BREAK

Margherita
Pizza
(G, MK)

Selection
of Patties
(CE, G)

Selection of Hot
Panninis
(G, MK)

Sausage Petit
Pain
(G)

Selection of
Patties
(CE, G)

BREAK

Garlic
Bread
(G)

Hash
Browns

Onion
Rings
(G)

Nachos, Tomato &
Cheese
(MK)

Flavoured Dough
Balls
(G, MK)

DELI

Jacket Potato
with a
Selection of
Toppings

Meatball
Marinara Sub
(CE, G, MK)

Jacket Potato
with a
Selection of
Toppings

Hot Cajun
Chicken Wrap
(E, G)

Chicken Burger
with French
Fries
(G)

MAIN

Creamy
Tomato Mac
& Cheese
(CE, G, MK)

Chicken Tikka
Masala with
Steamed Rice
(MK)

Sausage & Mash
with Seasonal
Vegetables
(G, MK, SU)

Pasta Bolognaise
(CE, G)

Fish & Chips
(E, F, G)

VEGGIE

Penne
Pomodoro
(G, CE)

Vegetable
Korma with
Steamed Rice
(CE, MK)

Quorn Sausage &
Mash with
Seasonal
Vegetables
(E, G, MK)

Roasted
Vegetable Pasta
(CE, G)

Mexican Veggie
Burger with
French Fries
(G)

PUD

Chocolate Chip
Cookie
(E, G, MK, SO)

Fruit Pot

Blueberry Muffin
(E, G, MK)

Fruity Jelly Pot

Chocolate
Brownie
(E, G, MK)

WEEK 2



APPLES
SEPTEMBER



ROCKET
OCTOBER



BUTTERNUTSQUASH
NOVEMBER



BRUSSEL SPROUTS
DECEMBER

WHATS IN SEASON...

MON

TUES

WED

THURS

FRI

BREAK

Vegetable Pattie
(CE, G)

Bacon Petit
Pain
(G)

Pepperoni
Pizza
(G, MK)

Selection
of Patties
(CE, G)

Meatball
Marinara Sub
(CE, G, MK)

BREAK

Garlic
Bread
(G)

Hash
Browns

Onion
Rings
(G)

Nachos, Tomato &
Cheese
(MK)

Flavoured Dough
Balls
(G, MK)

DELI

Spicy Vegetable
& Spinach Burrito
(CE, G)

Jacket Potato
with a
Selection of
Toppings

Hot Cajun Chicken
& Mixed Pepper
Wrap
(CE, G, MU)

Jacket Potato
with a
Selection of
Toppings

Beef Burger
with French
Fries
(G, SO)

MAIN

Tomato & Basil
Pasta Gratin
(CE, G, MK)

Sweet & Sour
Chicken with
Steamed Rice
(G, SO)

Chilli Con Carne
with Seasoned
Wedges
(CE, G)

Chicken
Carbonara
(G, MK)

Fish & Chips
(E, F, G)

VEGGIE

Creamy Mushroom
Pasta
(G, MK)

Black Bean
Vegetable Stir Fry
with Steamed Rice
(G, SO)

Veggie Chilli
with Seasoned
Wedges
(CE, G)

Tomato & Pepper
Pasta
(CE, G)

Quorn Hot Dog
with French
Fries
(E, G)

PUD

Shortbread
(G)

Fruit Pot

Chocolate Chip
Muffin
(E, G, MK)

Granola Pot
(G, MK)

Fruity
Flapjack
(G)



Faculty News

English News -BBC Young Reporter

At the end of the summer term, one of our Year 10 students, Romayssa, won 'article of the week' through the Young Reporters scheme. Congratulations Romayssa!

Follow the link for this year's brochure, you can find Romayssa's report on page 42.

Ms Durham

<https://www.youngreporter.co.uk/>

Young Reporter Scheme

Feature Years 10 to 11

Controversial redevelopment plan sparks protest by Romayssa Sebai, Walthamstow School For Girls - Commended



Following the fire that broke out in the early morning on Monday the 2nd of July, which destroyed more than half of the roof of the two-storey building and part of the first floor, Waltham Forest Council announced their redevelopment plans.

These included, remodeling estates, modernising the mall, building a second entrance to Walthamstow central station and improvements to the area's cultural facilities. Work was set to commence in early 2020 however this was quickly brought to a halt.

Although it has been several months later, repair works continue to be ongoing with the first floor still being closed off.

The fire was a shock to us all but it strengthened our community, with the 2500 Walthamstow Team being inundated with messages of support and donations to charities such as the Fashion & Textile Children Trust to aid families whose employment had been adversely affected by the fire.

Further appeals such as retailTRUST have been launched to raise vital funds to support staff from both national and

independent retailers affected by the fire.

These donations were greatly appreciated as they provided vital emotional support and financial assistance to ease the hardship of the incident. This will reflect our strong sense of community that we pride ourselves in.

However, the rebuild of the mall has undergone stiff criticism with concerns of loss of open space in the town centre, lack of affordable housing and gentrification.

Although the scheme is essentially focused on the redevelopment and extension of the mall, it also affects public spaces such as children's playground and would even mean chopping down a row of trees thus significantly altering the appearance of the area.

Tensions first arose due to the objections against the height of the proposed blocks and loss of almost a third of the public realm to private property developers.

However, it was the threat of the avenue of lime trees being felled (to make way for housing and shopping centre development) that sparked protests.

Although 24 new trees were set to be planted in their place, people still strongly

opposed the plan, claiming that 1300 trees do not replace old trees.

Campaigners from Save Our Square E17 led the event in Walthamstow Town square in hopes of attracting public support.

People of all ages gathered to tie messages such as 'This tree has been condemned to Death by Waltham Forest Council' and 'Save our lungs' as well as tying hearts to the trees.

Furthermore, in response to the plans, a local artists banded together to celebrate the beauty of the trees and highlight their benefits.

An exhibition, Reading between the Lines was displayed at Walthamstow Village Windows Gallery from 10th November to Sunday and December (which was also previously exhibited at the Wana Gallery for three days in October) to showcase their work in hopes of persuading developers to reconsider.

After four years of fighting, Waltham Forest Council has finally issued a long-awaited public statement to say that the avenue of Lime Trees will remain as part of the new development.

From mass petitions and letters to publicly events and protests, the people of Walthamstow have opposed the condemning of the trees for so long and it warms my heart to see such a successful outcome.

Adam Mandouch, 14 said: 'I'm so proud of our community, and the fact we were able to stop this terrible scheme has provided me with a sense of empowerment.'

Elaine Long, 14 said: 'I think it's great that our community's efforts have saved the trees, but it's sad that we weren't able to stop the development that will take away much of our green space.'

This victory represents our community is unwilling to be taken over by gentrification. I don't believe Walthamstow is suited for big shopping centres and supermarkets as we have always been a small and close-knit community.

'It's depressing to see how these big corporations have more say in what happens to our home than the people who live in it.'

This victory truly demonstrates the strength in our community and the immense impact our actions have. The lime avenue is an asset to our community, providing people with friendly areas to socialise amongst a busy urban environment.

With their historical, environmental and aesthetic value, I'm sure many people are thrilled to hear about the resistance to the development plans.

“Here is the Earth – Don’t spend it all at once” Competition

Back in January the Humanities faculty ran a competition inviting students to submit a piece of creative work to raise awareness of environmental issues. The idea was the brainchild of one of our former alumnae Dawn Smith, who approached the school offering to sponsor the award and make this competition possible.

Having received nearly eighty entries, we had originally planned to announce the winners shortly before Easter. However, this had to be put on hold due to the developing situation with COVID19 and the national lockdown.

Fortunately, we are delighted to announce that we are now in a position to publicise the final results:

In third place with her thoughtful poem entitled “I am dying, can’t you see?” was *Isla 8S*.

The second place entry was actually an anonymous piece of artwork, a copy of which can be seen below. If you are the artist, then please make yourself known to Mr Sterlini to arrange for your prize and certificate.

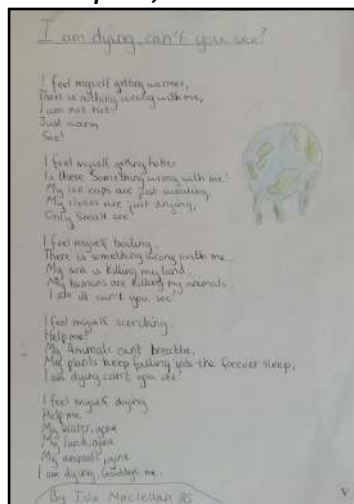
The overall winner, however, was *Evie 8F* for her illustrated poem “Look at this World.”

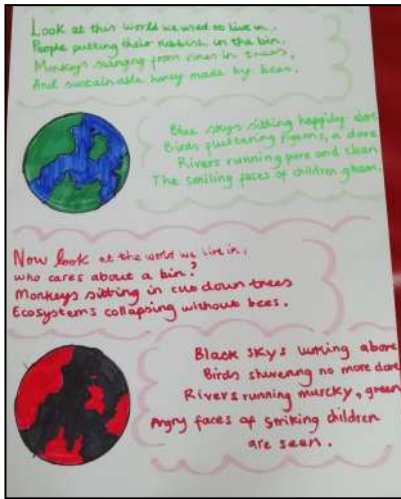
The winning students receive gift certificates of £10, £15 and £30 respectively, with *Evie* our overall winner, also being awarded a trophy.

2nd place, Anonymous



3rd place, *Isla 8S*





"Look at this World" ***1st place, Evie 8F***

The trophy itself is a special commission made of ancient driftwood and metal from recycled coffee tins. It was created by West Sussex artist Claire Perry and will be displayed in school to be awarded annually to the winner of future competitions. Keep an eye out for details of the 2020-21 competition next year.

Dawn was incredibly impressed by the overall standard of the entries and has also awarded a number of highly commended certificates to celebrate some of the other fantastic offerings

which didn't quite make the top three places. There are plans in place for a virtual exhibition of the three winning entries, along with a selection of some of the other best submissions.

Details relating to this will be published at a later date once plans have been finalised.

Dawn has also written a short piece briefly outlining why she originally wanted to run the competition and her experience as its patron for in its inaugural year.

A message from Dawn Smith who founded and sponsored the competition:

Selection criteria

The number of entries and the inventive, broad interpretation of the topic is inspiring.

With a total number of seventy-seven pieces of work, ranging from oil painting and sculpture to small and interesting sketches, it has been an extremely rewarding, but difficult, task to select prize winners.

Whilst staying at home, due to the current pandemic and so having more time to spare than usual, I looked through my souvenirs box. I found my old Walthamstow High School English homework book! I do remember how disheartening it felt to put my feelings into a creation, only to be marked down for handwriting or misspelled words. The times have



The trophy created by West Sussex artist Claire Perry is made of recycled materials.

changed (it was a VERY long time ago that I was a pupil) and so I have used the following criteria to help with my selection.

Firstly the entry must be original, then, of course relevant to the competition title. It should have effective impact and finally, express or evoke emotion.

I am pleased to say that all of the pieces were relevant to the topic. I am very proud that the young women in my old school are so intelligently engaged with the issues of Climate Chaos and Environmental Destruction.

You are the future.

A Brief Note about Me

May I introduce myself?

I was raised in the East End of London - the same as you all - surrounded by traffic and concrete. I was lucky that my parents took me to visit the Wiltshire countryside for holidays to visit an auntie. There I could paddle in streams and see bats flying in the evenings. Later we had a small holiday hut amongst fields in Essex where my father showed me bird's nests and grass snakes.

I have always since had empathy for all living things.

I do hope that you enjoyed taking part in this competition.

Every single entry had merit and gave me joy.

Well done school!

Further reading on this topic:

'The Book of Gutsy Women' by Hillary and Chelsea Clinton.

Published by Simon and Schuster, chapter three, 'Earth Defenders,' page 95.

Other inspiration:

For further female inspiration watch "#WildMorningswithChris -Episode 55"

on YouTube: <https://youtu.be/E0-kbaZ3Avs>

Mr Sterlini,
Head of Humanities,
Specialist Leader of Education





TRAVEL SAFE CHECKLIST

- ☐ Walk, cycle or scoot where possible
- ☐ Plan your journey in advance using TfL's Journey Planner
- ☐ Wear your face covering over your nose and mouth, unless you are exempt
- ☐ Keep your distance where possible – make sure not to huddle in groups at stations
- ☐ Wash your hands before and after your journey
- ☐ Carry hand sanitiser or use sanitiser points at stations
- ☐ Use contactless or Oyster to pay for your travel



**TRANSPORT
FOR LONDON**
EVERY JOURNEY MATTERS



**WEAR A FACE COVERING
ON PUBLIC TRANSPORT**

Transport for London



Bus Changes: School Routes

As schools start returning this week, we are encouraging everyone to walk, cycle or scoot the school run, where possible.

For those using public transport, we have introduced dedicated school travel only bus services across various busy routes. These will be during term time on weekdays from 07:30 to 09:30 and 14:30 to 16:30 to support increased demand and help with safe travel.

[Find out more about the changes to bus services.](#)

When using public transport there are a few things we ask you to keep in mind:

- Try **travelling during the quiet times**, many local stations have different quiet times. Check how busy any station is on the TfL network at any time or day using our [online tool](#) or our [TfL Go](#) app.
- You must wear a **face covering over your mouth and nose** for your entire journey including inside stations. Unless you are [exempt](#), you could be refused travel or face a £100 fine which doubles with every violation up to £3,200.
- Please maintain **social distancing** from other passengers and allow extra time as some station layouts may have changed.
- We have lots of online tools to help you **plan your journey**, including maps with [walking times between Tube stations](#) and [walking times between shops and attractions in West End](#).

School Calendar Dates for 2020-2021

Autumn Term 2020

- Wednesday 2 September to Friday 18 December
- Half Term: Monday 26 October to Friday 30 October
- Christmas holiday: Monday 21 December 2020 to Friday 1 January

Spring Term 2021

- Monday 4 January 2021 to Thursday 1 April
- Half Term: Monday 15 February to Friday 19 February
- Easter Holiday Friday 2 April 2021 to Friday 16 April

Summer Term 2021

- Monday 19 April 2021 to Thursday 22 July
- Half Term: Tuesday 1 June to Friday 4 June

